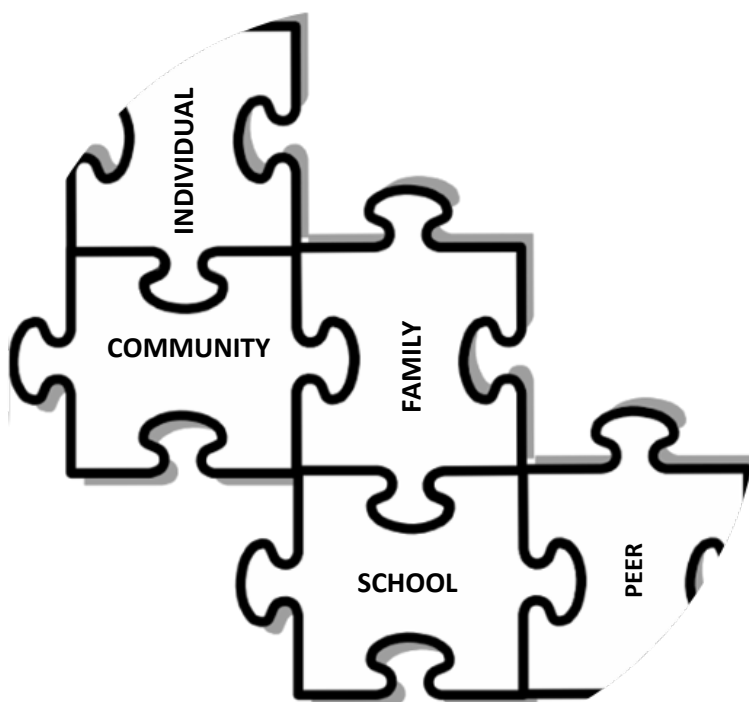


Comprehensive Strategy

Putting the Pieces Together for Positive Youth Development



Data Report to the Community—September 2018

COMPREHENSIVE STRATEGY

Facilitating the creation of resource tools for positive youth development

Progress Report: September 2018

For 22 years, Comprehensive Strategy has been collecting and compiling data to provide the Siouxland area with a tool to track risk factors for youth problem behaviors in our community. This report provides the newest data available in 2018.

YOUTH PROBLEM BEHAVIORS are Substance Abuse, Delinquency, Teen Pregnancy, School Dropout, and Violence. Years of local, state, and national research indicate that these five youth problem behaviors interfere with positive youth development.

RISK FACTORS are research-based conditions that increase the likelihood that a child will develop one or more behavioral problems in adolescence. Priority risks for this community were identified, and data used to track those risks are included in this report.

This Report includes the following information:

- Logic Model for the Comprehensive Strategy Planning Process
- Risk Focused Prevention Grid
- Comprehensive Strategy Scorecard
- General Quick Facts
- Large Urban Eight Data (Iowa)
- Problem Behavior Data for Substance Abuse, Teen Pregnancy, School Drop-Out, Violence, and Delinquency
- Priority Risk Factor Data for Dakota and Woodbury Counties
 - Availability of Drugs
 - Early Initiation of the Problem Behavior
 - Economic Deprivation
 - Academic Failure in Late Elementary
 - Family History/Family Conflict
- Sources of Risk Factor Data
- Health Outcome Data: Dakota and Woodbury Counties
- CARES' Tri-State Youth Survey on Alcohol and Other Drugs: 6th, 8th, 10th, 12th grades
- Public Data Sources
- Planning Partners

Comprehensive Strategy holds community meetings to provide a forum for community discussion and education because we believe that community dialogue is critical to successful community planning. If you would like to be added to our invitation list, please contact us.

We sincerely wish to thank our Planning Partners and everyone who is working to make this a safe, healthy, and nurturing community for our youth and their families.

Barbara Aalfs and Linda Phillips






Comprehensive Strategy Council

Contact Information: comprehensivestrategy@gmail.com

Information available on Comprehensive Strategy link at www.siouxlandcares.org

- Progress Report 2018 and previous Progress Reports
- Additional data on risk factors, protective factors, and community outcomes
- *Poverty Research Project*, September 2013

Logic Model for Comprehensive Strategy Planning Process

	Vision: Our community will provide opportunities for youth and families to be healthy and resilient contributors to society.	
Long-term Outcome 	Positive youth development	
Intermediate Outcomes	<p>Positive changes in youth behavior and attitudes:</p> <ul style="list-style-type: none"> • Reduction of violence • Reduction of alcohol and other drug abuse • Reduction of delinquency • Reduction of teen pregnancy • Reduction of school drop-out 	
Short-term Outcomes 	<p>Reduction of the presence of the following risk factors:</p> <ul style="list-style-type: none"> • Availability of drugs • Extreme economic deprivation • Family history of the problem behavior/family conflict • Academic failure beginning in late elementary school • Early initiation of the problem behavior 	<p>Increased protective factors that buffer the impact of risk factors in a child's life:</p> <ul style="list-style-type: none"> • Individual characteristics <ol style="list-style-type: none"> 1. Gender 2. A resilient temperament 3. A positive social orientation 4. Intelligence • Bonding <ol style="list-style-type: none"> 1. Opportunities 2. Skills, and 3. Recognition • Healthy beliefs and clear standards <ol style="list-style-type: none"> 1. Wide, consistent support for those with whom youth are bonded 2. Consequences for not following standards are consistent
Outputs 	<p>(achieved outputs) Ongoing data collection, analysis, monitoring, and evaluation</p> <p>(desired outputs) Targeted goals in the reduction of risk factors and problem behaviors (1-5,10,15 years)</p>	
Strategies 	<p>Comprehensive Strategy community strategies for programs and services:</p> <ul style="list-style-type: none"> • Family focused strategies • School focused strategies • Individual focused strategies • Community focused strategies 	
Inputs 	<p>Communities That Care planning model – collaborative community planning work groups and CS Council</p> <ul style="list-style-type: none"> • Phase 1: Getting started by mobilizing the community and analyzing the current environment • Phase 2: Involving the community in vision setting and crafting a structure to support the planning effort • Phase 3: Developing a data-based profile of risk and protection • Phase 4: Creating a comprehensive youth development plan • Phase 5: Implementing the plan <p>Community/state/federal/private sector financial, human and in-kind resources and support</p>	

Risk Focused Prevention is based on a simple premise: to prevent a problem from happening, the community must identify the factors that increase the risk of that problem developing and then find ways to reduce the risks by enhancing protective or resiliency factors. Of the twenty risk factors below, Our community has identified six priority risk factors to be targeted for our community as noted below with an *.

Risk Factors

Adolescent Problem Behaviors

Community	Substance Abuse	Delinquency	Teen Pregnancy	School Drop-Out	Violence
Availability of drugs *	●				●
Availability of firearms		●			●
Community laws and norms favorable toward drug use, firearms and crime	●	●			●
Media portrayals of violence					●
Transitions and mobility	●	●		●	
Low neighborhood attachment and community disorganization	●	●			●
Extreme economic deprivation *	●	●	●	●	●
Family					
Family history of the problem behavior *	●	●	●	●	●
Family management problems	●	●	●	●	●
Family conflict *	●	●	●	●	●
Favorable parental attitudes and involvement in the problem behavior	●	●			●
School					
Academic failure beginning in late elementary school *	●	●	●	●	●
Lack of commitment to school	●	●	●	●	●
Peer and Individual					
Early and persistent antisocial behavior	●	●	●	●	●
Rebelliousness	●	●		●	
Friends who engage in the problem behavior	●	●	●	●	●
Gang involvement	●	●			●
Favorable attitudes toward the problem behavior	●	●	●	●	
Early initiation of the problem behavior *	●	●	●	●	●
Constitutional factors	●	●			●

Comprehensive Strategy SCORECARD – 2018 Snapshot

Positive gains

Partial gains

Negative gains



GOAL 1: Reduce the availability of alcohol, tobacco, and other drugs for illegal purposes.									
Community Strategies: Compliance Checks, beSomebody social norming campaigns, surveys, after prom/homecoming school parties, school resource officers									
YOUTH SURVEY - ACCESS	1999		2014		2016		2018		+/-
Indicator 1: Youth say <i>Difficult</i> to Access Alcohol	27%		44%		45%		54%		↑
Indicator 2: Youth say <i>Difficult</i> to Access Tobacco	25%		56%		57%		62%		↑
Indicator 3: Youth say <i>Difficult</i> to Access Marijuana	45%		67%		66%		67%		↑
Indicator 4: Youth say <i>Difficult</i> to Access Meth	66%		87%		89%		88%		↑
	2007		2015		2016		2017		
COMPLIANCE CHECKS # Conducted / % Passed	#	Rate	#	Rate	#	Rate	#	Rate	
Indicator 5: Tobacco - WC	218	84%	131	95%	118	86%	131	84%	↔
Indicator 6: Tobacco - SCPD			NA	89%	NA	85%	NA	89%	↔
Indicator 7: Alcohol – SCPD			NA	87%	NA	83%	NA	89%	↑
Indicator 8: Tobacco / Alcohol – SSC PD	19	95%	31	94%	31	94%	30	97%	↑
GOAL 2: Foster economic growth that will enable families to achieve financial independence.									
Community Strategies: SIMPCO, Chambers, DHHS, ResCare, employment services									
	2007		2014		2015		2016		+/-
Indicator 1: All Ages in Poverty – Woodbury County IA	15.4%		15.5%		14.0%		13.3%		↓
All Ages in Poverty – Dakota County NE	11.8%		14.8%		14.6%		11.4%		↔
Indicator 2: Under age 18 in Poverty – WC IA	22.5%		22.2%		19.6%		18.5%		↓
Indicator 3: Family Poverty, % w/children <18, WC IA	17.6%		22.0%		19.1%		16.3%		↓
Family Poverty, % w/children <18, DC, NE	16.8%		22.1%		20.7%		17.7%		↑
Indicator 4: % Students Eligible for Free/Reduced Meals – WC, IA	39%		55%		59%		60%		↑
% Students Eligible for Free/Reduced Meals – DC, NE	33%		70%		69%		57%		↑
Indicator 5: Per Capita Income, Avg. Income/Person – WC, IA	\$32,144		\$23,221		\$23,630		\$24,469		↓
Per Capita Income, Avg. Income/Person – DC, NE					\$20,543		\$21,710		↔
Indicator 6: Per Unemployed – WC, IA	3.9%		4.9%		4.2%		3.8%		↓
Per Unemployed – DC, NE	4.0%		3.7%		3.5%		4.2%		↓

Note: Initial year of data collection serving as starting point. Arrows and highlights reflect both a comparison of baseline (2007) to present (2016/2018/2016-2017 as well as comparison between most recent year and previous year.

GOAL 3: Provide opportunities and support so families will be safe, healthy, and nurturing.						
Community Strategies: Family Court, CASA, domestic violence shelter and support services, HOPES, Community Health, District Health, mental and behavioral health, substance abuse						
	2007	2014	2015	2016	2017	+/-
Indicator 1: Domestic Violence Reported Victims – WC, IA	566	393	579	566	NYA	↔
Indicator 2: Domestic Violence Arrests – WC, IA	248	395	346	326	NYA	↑
Domestic Violence Arrests (Simple + Aggravated) – DC, NE	49	46	32	71	NYA	↑
Indicator 3: Confirmed Abused Children/1,000 WC, IA	20.31	13.7	16.8	16.6	24.2	↑
Indicator 4: Confirmed Abused Children # - WC, IA	562	350	447	448	654	↑
Indicator 5: Teen Pregnancy - WC, IA	116.2 (2006)	54.1	52.8	59.9	69.4	↑
GOAL: 4: Provide early opportunities, motivation, and support for academic success for all youth.						
Community Strategies: 0-3 primeage to engage, early education and care programming, preschools, Head Start/Early Head Start, dual language program, SPED, STEM, Future Ready, Career Academy						
	2008-2009	2014-2015	2015-2016	2016-2017	+/-	
Indicator 1: School Drop Out Rate/Public (7-12) WC, IA	3.3%	1.9%	1.7%	0.5%	↓	
SC, IA	4.0%	2.4%	2.1%	2.5%	↓	
SSC, NE	0.7%	0.8%	1.2%	1.0%	↔	
Indicator 2: Graduation Rate – Public – WC, IA	82.5%	89.2%	88.9%	89.6%	↑	
SC, IA	79.5%	87.2%	87.5%	83.9%	↔	
SSC, NE	88.2%	82.8%	88.2%	89.9%	↑	
Indicator 3: Academic Failure – Late Elementary ITBS – 4 th Grade Reading, SC, IA	4.8	5.2	5.2	5.5	↑	
ITBS – 4 th Grade Math	4.6	4.8	4.8	4.8	↔	
GOAL: 5: Provide early opportunities and motivation for youth to develop positive, meaningful relationships with their community.						
Community Strategies: Teen court, Sioux City Mayor's Youth Commission/Young Ambassadors, Big Brothers Big Sisters, SSC and Heelan TeamMates mentoring programs						
	2007	2014	2015	2016	+/-	
Indicator 1: Delinquency Petitions Filed – WC, IA	187	187	150	187	↔	
Indicator 2: Delinquency Adjudications – WC, IA	100	60	43	63	↓	
Adjudication Youth – DC, NE	173	103	61	53	↓	
Indicator 3: Juvenile Arrests – WC, IA	1622	1172	1057	737	↓	
Juvenile Arrests – DC, NE	249	155	156	129	↓	

Note: NYA = Data Not Yet Available. Initial year of data collection serving as starting point. Arrows and highlights reflect both a comparison of baseline (2007) to present (2016/2018/2016-2017 as well as comparison between most recent year and previous year.

General Quick Facts - 2017	Woodbury County, IA	Iowa	Dakota County, NE	Nebraska	United States
Population					
Population estimates, July 1, 2017 (V2017)	102,429	3,145,711	20,186	1,920,076	325,719,178
Population estimates, April 1, 2016 (V2016)	102,779	3,134,693	20,456	1,907,116	323,127,513
Population estimates, base, April 1, 2010 (V2017)	102,177	3,046,869	21,006	1,826,327	308,758,105
Population estimates, base April 1, 2010 (V2016)	102,177	3,046,869	21,006	1,826,334	308,758,105
Population, percent change, April 1, 2010 (estimate to July 1, 2017, (V2017)	0.2%	3.2%	-3.9%	5.1%	5.5%
Population, percent change - April 1, 2010 (estimate base) to July 1, 2016 (V2016)	0.6%	2.9%	-2.6%	4.4%	4.7%
Population, Census, April 1, 2010	102,172	3,046,355	21,006	1,826,341	308,745,538
Age and Gender					
Persons under 5 years, percent, July 1, 2016 (V2016)	7.3%	6.4%	8.6%	7.0%	6.2%
Persons under 5 years, percent, April 1, 2010	7.8%	6.6%	9.0%	7.2%	6.5%
Persons under 18 years, percent, July 1, 2016 (C2016)	26.3%	23.3%	28.8%	24.8%	22.8%
Persons under 18 years, percent, April 1, 2010	26.6%	23.9%	30.1%	25.1%	24.0%
Persons 65 years and over, percent, July 1, 2016 (V2016)	14.2%	16.4%	13.7%	15.0%	15.2%
Persons 65 years and over, percent, April 1, 2010	12.8%	14.9%	11.4%	13.5%	13.0%
Female persons, percent, July 1, 2016, (V2016)	50.4%	50.3%	49.8%	50.2%	50.8%
Female persons, percent, April 1, 2010	50.7%	50.5%	50.1%	50.4%	50.8%
Race and Hispanic					
White alone, percent, July 1, 2016 (V2016)	87.9%	91.4%	85.5%	88.9%	76.9%
Black or African American alone, percent, July 1, 2016, (V2016)	3.4%	3.7%	4.5%	5.0%	13.3%
American Indian and Alaska Native alone, percent, July 1, 2016 (V2016)	2.7%	0.5%	4.1%	1.4%	1.3%
Asian alone, percent, July 1, 2016 (V2016)	2.9%	2.5%	3.5%	2.5%	5.7%
Native Hawaiian and Other Pacific Islander, percent, July 1, 2016 (V2016)	0.2%	0.1%	0.4%	0.1%	0.2%
Two or More Races, percent, July 1, 2016 (V2016)	2.9%	1.8%	2.0%	2.1%	2.6%
Hispanic or Latino, percent, July 1, 2016 (V2016)	16.0%	5.8%	38.8%	10.7%	17.8%
White alone, not Hispanic or Latino, percent, July 1, 2016 (V2016)	74.1%	86.2%	49.5%	79.6%	61.3%
Population Characteristics					
Veterans, 2012-2016	6,209	203,277	1,025	127,340	19,535,341
Foreign born persons, percent, 2012-2016	8.7%	4.9%	22.5%	6.7%	13.2%
Housing					
Housing units, July 1, 2016 (V2016)	41,989	1,380,162	7,762	827,156	135,697,926
Housing units, July 1, 2010	41,484	1,336,417	7,631	796,793	131,704,730
Owner-occupied housing unit rate, 2012-2016	67.3%	71.1%	66.7%	66.0%	63.6%
Medium value of owner-occupied housing units, 2012-2016	\$ 104,300	\$ 132,800	\$ 108,400	\$ 137,300	\$ 184,700
Median selected monthly owner costs with a mortgage, 2012-2016	\$ 1,034	\$ 1,180	\$ 1,059	\$ 1,282	\$ 1,491
Median selected monthly owner costs without a mortgage, 2012-2016	\$ 411	\$ 441	\$ 498	\$ 481	\$ 462
Median gross rent, 2012-2016	\$ 693	\$ 715	\$ 685	\$ 745	\$ 949
Building permits, 2016	277	14,317	33	8,078	1,206,642
Education					
High school graduate or higher, percent of persons age 25 years+, 2012-2016	85.7%	91.7%	74.3%	90.7%	87.0%
Bachelor's degree or higher, percent of persons age 25 years+, 2012-2016	21.7%	27.2%	13.0%	30.0%	30.3%

General Quick Facts - 2017	Woodbury County, IA	Iowa	Dakota County, NE	Nebraska	United States
Families and Living Arrangements					
Households, 2012-2016	38,536	1,242,641	7,314	741,581	117,716,237
Persons per household, 2012-2016	2.58	2.42	2.79	2.47	2.64
Living in same house 1 year ago, percent of persons age 1 year+, 2012-2016	84.7%	84.6%	90.0%	83.9%	85.2%
Language other than English spoken at home, percent of persons age 5 years+, 2012-2016	15.0%	7.5%	39.0%	11.0%	21.1%
Health					
With a disability, under age 65 years, percent 2012-2016	8.8%	7.9%	5.9%	7.5%	8.6%
Persons without health insurance, under age 65 years, percent	7.2%	5.9%	16.0%	9.5%	10.1%
Economy					
In civilian labor force, total, percent of population age 16 years+, 2012-2016	69.4%	67.6%	71.4%	69.7%	63.1%
In civilian labor force, female, percent of population age 16 years+, 2012-2016	64.6%	63.3%	65.9%	65.1%	58.3%
Total accommodation and food services sales, 2012 (\$1,000)	240,746	5,468,687	25,059	3,094,498	708,138,598
Total health care and social assistance receipts / revenue, 2012 (\$1,000)	\$ 820,083	18,583,828	33,733	12,869,418	2,040,441,203
Total manufacturers shipments, 2012 (\$1,000)	\$ 4,061,248	116,668,830	D	57,499,177	5,696,729,632
Total merchant wholesaler sales, 2012 (\$1,000)	\$ 2,107,735	62,318,301	219,088	42,618,995	5,208,023,478
Total retail sales, 2012 (\$1,000)	\$ 1,776,121	44,905,624	198,738	30,470,717	4,219,821,871
Total retail sales per capita, 2012	\$ 17,358	\$ 14,607	\$ 9,501	\$ 16,422	\$ 13,443
Transportation					
Mean travel time to work (minutes), workers age 16 years+, 2012-2016	18.0	18.9	14.9	18.3	26.1
Income and Poverty					
Median household income (in 2016 dollars), 2012-2016	\$ 49,010	\$ 54,570	\$ 52,336	\$ 54,384	\$ 55,322
Per capita income in past 12 months (in 2016 dollars), 2012-2016	\$ 24,469	\$ 28,872	\$ 21,710	\$ 28,596	\$ 29,829
Persons in poverty, percent	13.3%	11.8%	12.0%	11.4%	12.7%
Business					
Total employer establishments, 2015	2,668	80,952	430	53,719	7,663,938
Total employment, 2015	46,054	1,338,418	11,253	870,279	124,085,947
Total annual payroll, 2015 (\$1,000)	1,618,856	55,079,743	436,165	36,967,924	6,253,488,252
Total employment, percent change, 2014-2015	-0.2%	1.7%	4.5%	2.3%	2.5%
Total nonemployer establishments, 2015	5,753	207,167	1,028	131,518	24,331,403
All firms, 2012	7,667	259,121	1,349	164,089	27,626,360
Men-owned firms, 2012	4,153	135,382	706	83,696	14,844,597
Women-owned firms, 2012	2,310	82,345	414	51,936	9,878,397
Minority-owned firms, 2012	856	14,707	238	14,571	7,952,386
Non-minority-owned firms, 2012	6,419	236,561	1,033	144,122	18,987,918
Veteran-owned firms, 2012	672	25,889	120	16,693	2,521,682
Non-veteran-owned firms, 2012	6,328	217,779	1,123	137,254	24,070,685
Geography					
Population per square mile, 2010	117.1	54.5	79.5	23.8	87.4
Land area in square miles, 2010	872.83	55,857.13	264.26	76,824.17	3,531,905.43
Source: U.S. Census, 2017 Estimated					

The Large Iowa Urban Eight Locations

The Large Iowa Urban Eight Locations

Students Eligible for Free and Reduce Lunch Program

	2012-13	2013-14	2014-15	2015-16	2016-17	2017-18
State of Iowa	40.3%	41.1%	41.0%	41.8%	41.3%	40.5%
Cedar Rapids	46.5%	49.0%	50.0%	51.1%	50.1%	53.4%
Council Bluffs	62.3%	55.9%	50.8%	64.1%	70.9%	58.5%
Davenport	56.8%	62.8%	53.3%	65.6%	65.9%	62.3%
Des Moines Independent	71.7%	70.2%	73.2%	75.1%	74.1%	75.7%
Dubuque	35.6%	37.4%	37.1%	36.9%	35.6%	37.0%
Iowa City	30.2%	34.4%	33.7%	35.7%	36.8%	35.5%
Sioux City	57.7%	62.4%	66.2%	67.8%	63.1%	58.2%
Waterloo	66.7%	67.0%	69.5%	67.7%	69.0%	56.1%
Average of 8	53.4%	54.9%	54.2%	58.0%	58.2%	54.6%

1 yr change	2 yr change
-1.9%	-3.1%
6.5%	4.4%
-17.5%	-8.8%
-5.4%	-5.0%
2.1%	0.7%
3.9%	0.1%
-3.5%	-0.6%
-7.7%	-14.2%
-18.7%	-17.1%
-6.2%	-5.9%

Source: Iowa Public School K-12 Students Eligible for Free and Reduced-Priced Lunch by District, October count; **2017-2018 Sioux City via Iowa Public Schools = 58.2%, Sioux City Schools report 64.0%. Refer to explanation note below.**

Graduation rates	2012-13	2013-14	2014-15	2015-16	2016-17	2017-18
State of Iowa	89.7%	90.5%	90.8%	91.3%	91.0%	
Cedar Rapids	80.9%	85.0%	83.4%	83.9%	83.7%	Not yet available 9/8/18
Council Bluffs	84.7%	85.4%	88.5%	87.1%	88.4%	
Davenport	79.0%	82.8%	82.6%	83.5%	83.1%	
Des Moines	79.4%	81.7%	78.3%	81.2%	82.5%	
Dubuque	89.1%	91.5%	90.9%	89.8%	89.7%	
Iowa City	87.9%	90.4%	93.0%	93.9%	90.2%	
Sioux City	87.1%	85.6%	87.2%	87.5%	83.9%	
Waterloo	70.5%	74.2%	80.3%	77.4%	84.2%	
Average of 8	71.6%	72.7%	72.5%	74.7%	74.6%	

1 yr change	2 yr change
-0.4%	0.2%
-0.2%	0.4%
1.5%	-0.1%
-0.4%	0.6%
1.6%	5.3%
-0.1%	-1.3%
-3.8%	-3.0%
-4.2%	-3.8%
8.8%	4.8%
-0.1%	2.8%

Source: Iowa Department of Education, Information and Analysis, Basic Educational Data Survey (BEDS) and SRI (EASIER) Files, Class Year, 4-Year Graduation Data by District and Subgroup

Teen birth rates per 1000 <age 20

	2007	2013	2014	2015	2016	2017
State of Iowa	89.1	58.9	52.1	41.4	45.7	44.3
Blackhawk	98.3	61.0	51.9	44.4	43.7	44.6
Dubuque	79.6	49.2	44.2	38.2	51.0	38.1
Johnson	46.7	24.3	23.0	19.9	22.1	16.8
Linn	70.3	47.0	43.2	31.2	41.2	36.2
Polk	90.2	53.9	50.7	32.5	46.6	45.8
Pottawatomie	119.2	81.5	79.5	63.4	65.1	62.3
Scott	105.4	81.5	78.4	57.1	57.8	56.8
Woodbury	106.7	77.3	54.1	52.8	59.9	69.4
Average of 8	89.55	59.5	53.1	42.4	48.4	46.3

1 yr change	10-yr change
-3.1%	-50.3%
2.1%	-54.6%
-25.3%	-52.1%
-24.0%	-64.0%
-12.1%	-48.5%
-1.7%	-49.2%
-4.3%	-47.7%
-1.7%	-46.1%
15.9%	-35.0%
-4.5%	-48.4%

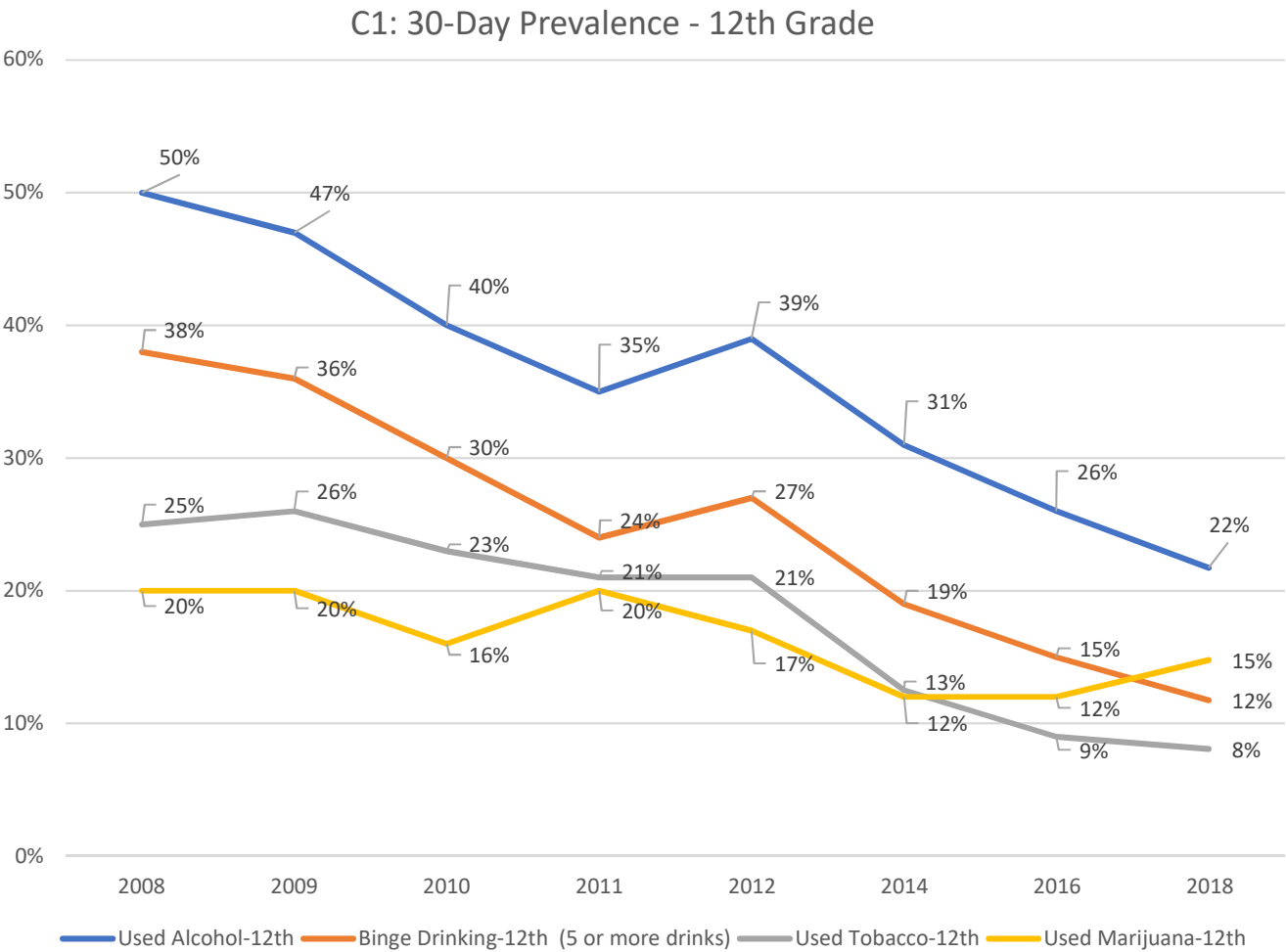
Source: <https://tracking.idph.iowa.gov/Reproduction-and-Birth/Birth-Rate-Mothers-Under-20>

NOTE: Beginning 2017-2018, Students Eligible for Free and Reduced Lunch Program - At least one building in the district participates in the Community Eligibility Provision (CEP). CEP is a non-pricing meal service option for schools and school districts in low-income areas. CEP allows the nation's highest poverty schools to serve breakfast and lunch at no cost to all enrolled students without collecting household applications. Because applications are no longer required, a low percentage of students return the application; thus, making it look like fewer students qualify for Free and Reduced Lunch. This percentage is then combined with the remaining school buildings to calculate the Iowa Department of Education's K-12 Students Eligible for Free and Reduced - Price Lunch by District Data.

**Five, Ten, and Fifteen Year Target Outcomes For the Reduction of Youth Problem Behaviors:
Substance Abuse, Violence, Delinquency, Teen Pregnancy, School Drop Out**

REDUCTION OF SUBSTANCE ABUSE	Source	Area	2008	2009	2010	2011	2012	2013	2014	2015	2016	2017	2018
30-Day Prevalence-Alcohol:													
Used Alcohol-12th	CARES	Tri	50%	47%	40%	35%	39%	*	31%	*	26%	*	22%
Binge Drinking-12th (5 or more drinks)	CARES	Tri	38%	36%	30%	24%	27%	*	19%	*	15%	*	12%
30-Day Prevalence-Used Tobacco-12th	CARES	Tri	25%	26%	23%	21%	21%	*	13%	*	9%	*	8%
30-Day Prevalence-Used Marijuana-12th	CARES	Tri	20%	20%	16%	20%	17%	*	12%	*	12%	*	15%
<i>Note: Survey taken every two years beginning in 2012</i>													
REDUCTION OF TEEN PREGNANCY	Source	Area	2008	2009	2010	2011	2012	2013	2014	2015	2016	2017	2018
Teen Birth Ratio per 1,000 live births, <20	IDPH	WC	119.0	129.4	120.5	89.1	97.7	77.3	78.4	57.1	59.9	69.4	NA
Teen Birth Rate % of live births <20	IDPH	WC	11.9%	12.9%	12.1%	8.9%	9.8%	7.7%	7.8%	5.7%	6.0%	6.9%	NA
Teen Birth Rate % of live births <20	IDPH	IA	9.0%	8.7%	7.9%	7.1%	6.6%	5.9%	5.2%	4.1%	4.6%	4.4%	NA
Teen Birth Rate % of live births <20	DC-F	DC	12.8%	13.0%	11.3%	10.2%	9.8%	8.2%	9.0%	9.4%	6.2%	NYA	NA
Teen Birth Rate % of live births <20	DC-F	NE	8.6%	8.3%	7.6%	6.8%	6.5%	6.0%	5.3%	5.2%	4.6%	NYA	NA
REDUCTION OF SCHOOL DROP-OUT			8/9	9/10	10/11	11/12	12/13	13/14	14/15	15/16	16/17	17/18	
School Drop Out-Rate-Public (7-12)	I	WC	3.3%	5.0%	3.9%	2.7%	2.8%	1.6%	1.9%	1.7%	0.5%	NYA	NA
School Drop Out-Rate-Public (7-12)	I	SC	4.0%	6.3%	4.8%	3.3%	3.3%	1.9%	2.4%	2.1%	2.5%	NYA	NA
School Drop Out-Rate-SSC (7-12)	DC-G	SSC	0.7%	1.5%	1.3%	1.5%	1.1%	0.57%	0.8%	1.2%	1.0%	NYA	NA
School Drop Out Rate-DV	V-1	DV	0.7%	1.5%	0.2%	1.9%	1.0%	0.20%	1.1%	0.6%	1.2%	NYA	NA
Graduation Rate	R	WC	82.5%	83.1%	87.0%	87.2%	89.0%	88.3%	89.2%	88.9%	89.6%	NYA	NA
Graduation Rate	R	SC	79.5%	79.2%	84.3%	84.7%	87.1%	85.6%	87.2%	87.5%	83.9%	NYA	NA
Graduation Rate	DC-G	SSC	88.2%	93.0%	84.6%	87.7%	85.6%	89.7%	82.8%	88.2%	89.9%	NYA	NA
Graduation Rate	V	DV	94.3%	94.7%	85.3%	83.1%	85.1%	97.7%	92.9%	91.8%	92.0%	NYA	NA
REDUCTION OF VIOLENCE	Source	Area	2008	2009	2010	2011	2012	2013	2014	2015	2016	2017	2018
Simple Assault, # Juvenile Arrests	G	WC	243	238	297	250	195	218	187	165	159	NYA	NA
Simple Assault, # Juvenile Arrests	DC-H	DC	56	59	39	43	28	27	15	24	19	17	NA
REDUCTION OF DELINQUENCY	Source	Area	2008	2009	2010	2011	2012	2013	2014	2015	2016	2017	2018
Juvenile Larcenies-# Juvenile Arrests	G	WC	397	385	430	421	355	346	286	222	236	NYA	NA
Juvenile Larcenies-# Juvenile Arrests	DC-H	DC	46	69	51	88	57	65	59	57	40	8	NA

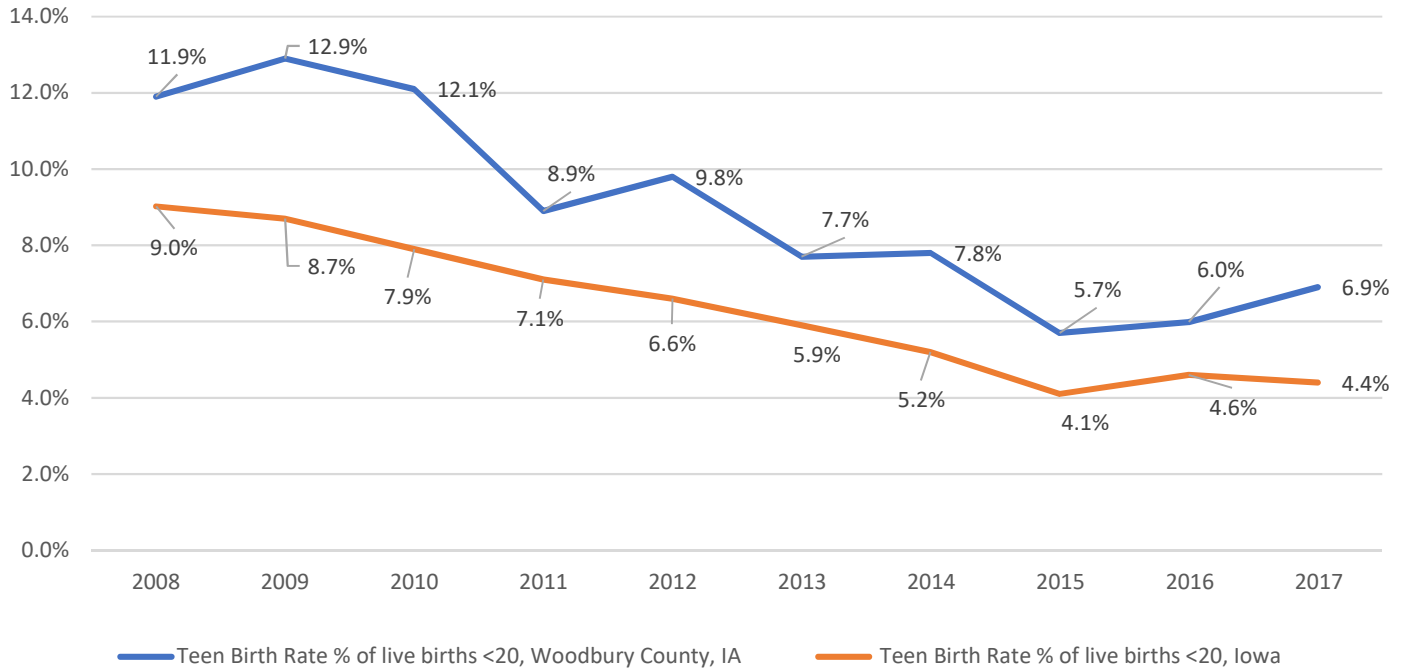
Reduction of Youth Problem Behaviors – Alcohol / Drugs



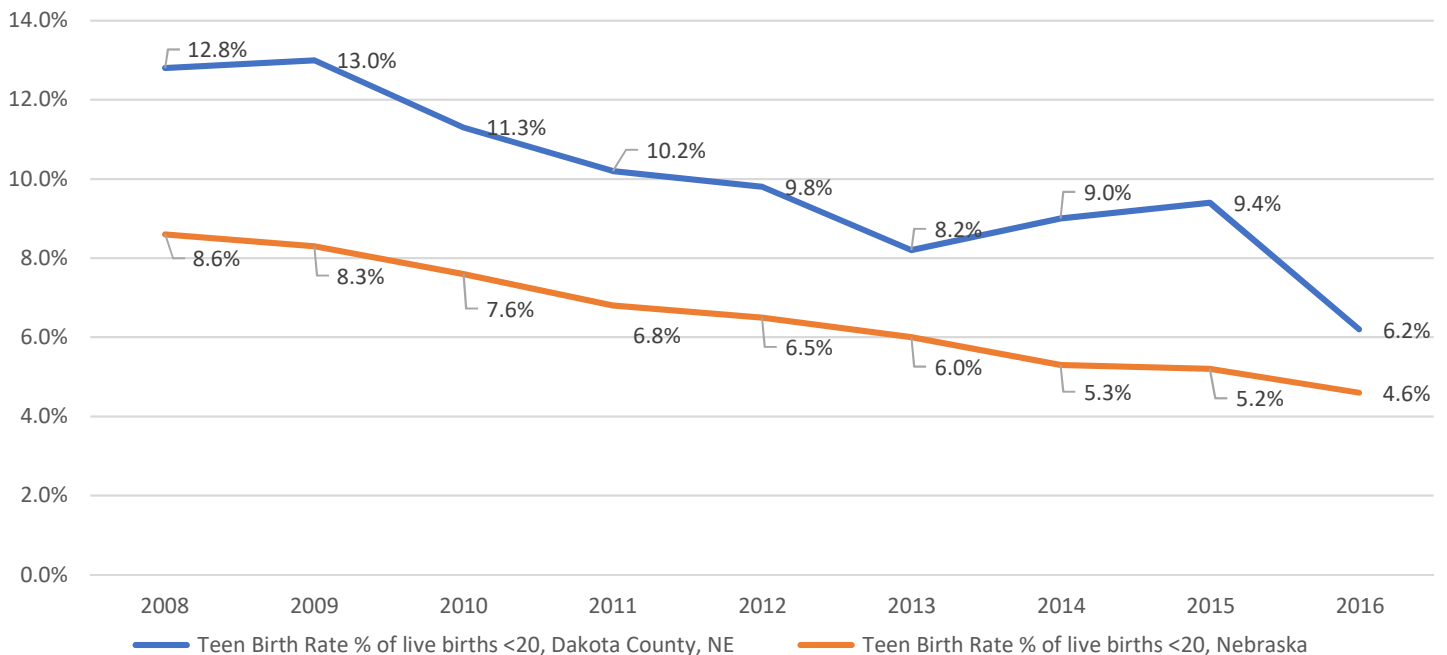
Source: Siouxland CARES Greater Sioux City Metro Area Youth Survey, 2018

Reduction of Youth Problem Behaviors – Teen Pregnancy

C2: Reduction of Teen Pregnancy - Iowa / Woodbury County

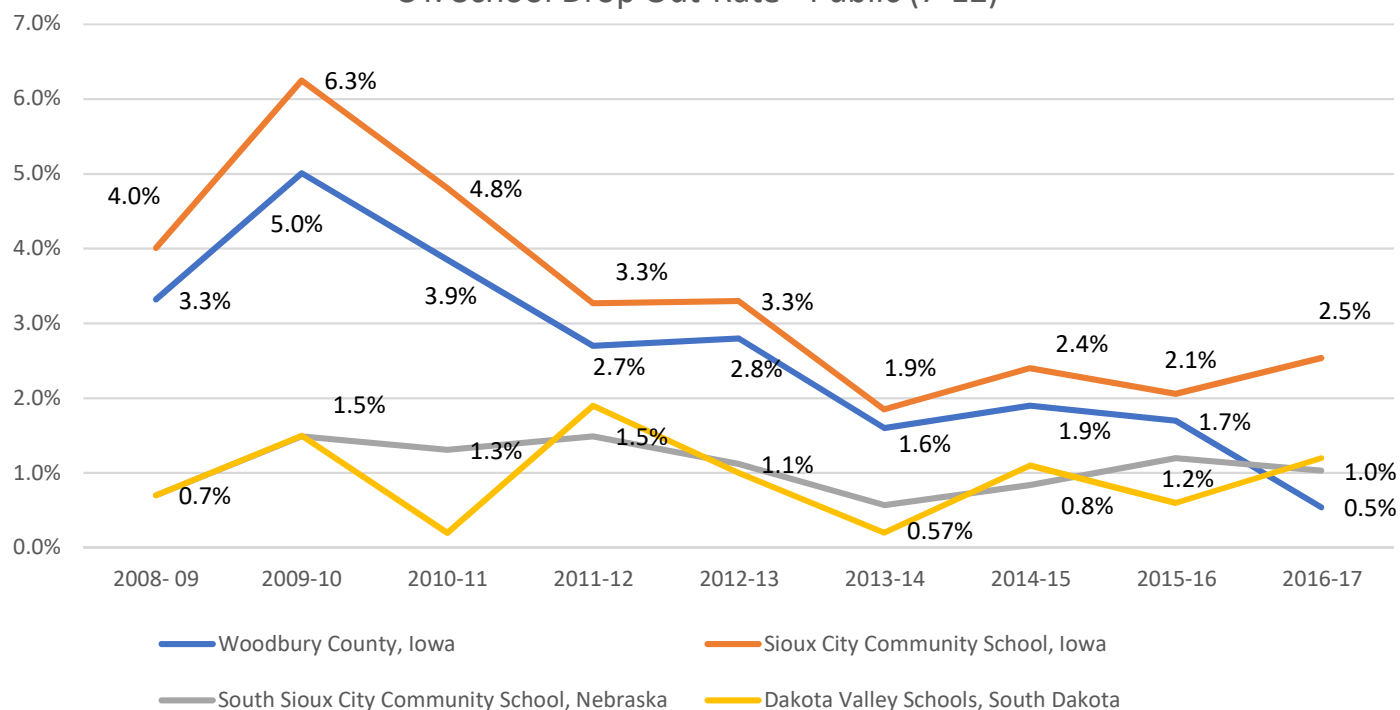


C3: Reduction of Teen Pregnancy - Nebraska / Dakota County

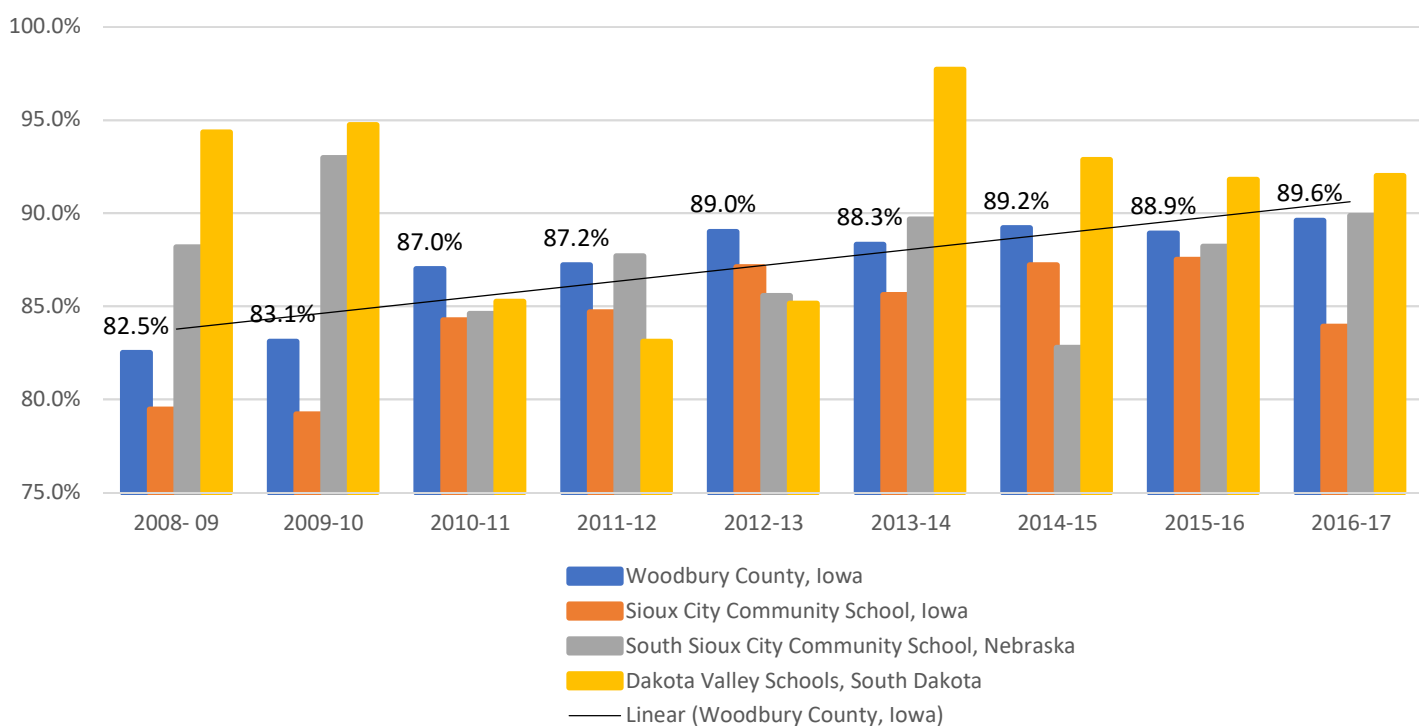


Reduction of Youth Problem Behaviors – School Drop Out and Graduation Rates

C4: School Drop Out-Rate - Public (7-12)

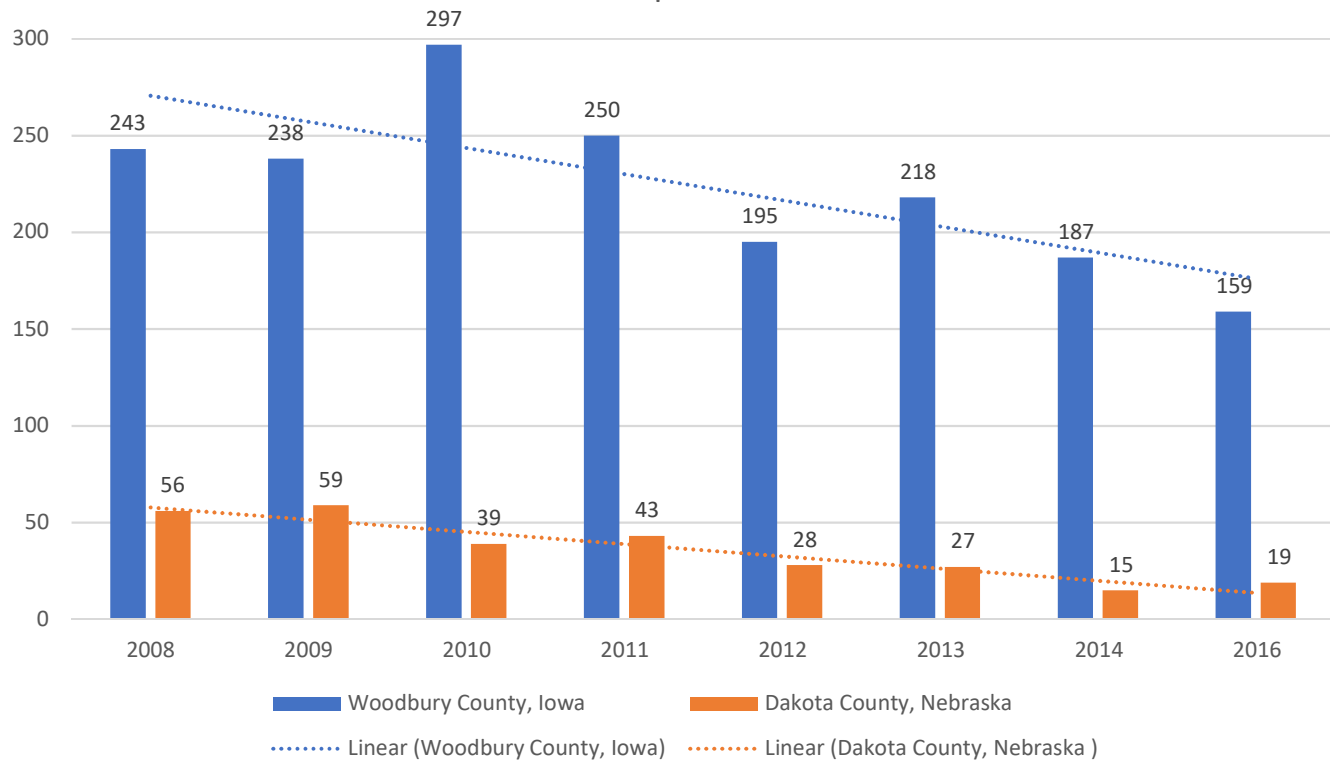


C5: Graduation Rate

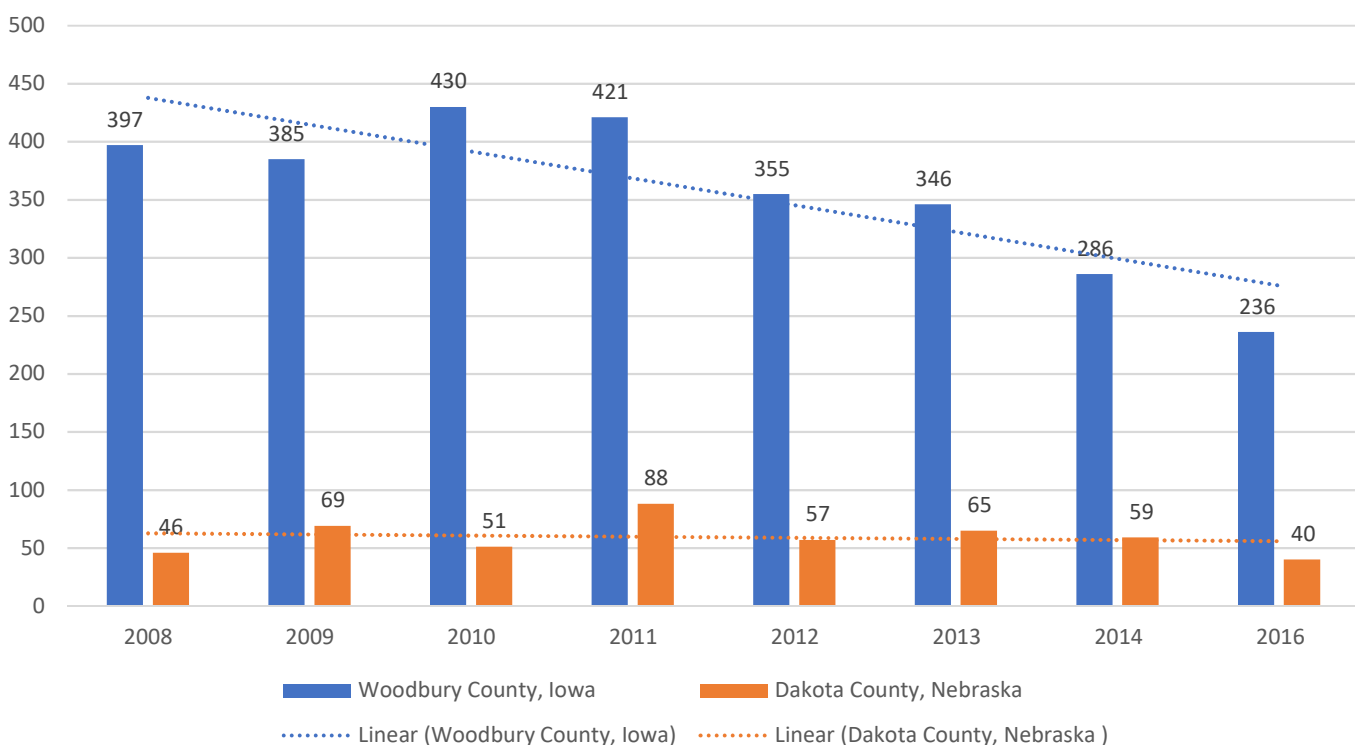


Reduction of Youth Problem Behaviors – Violence

C6: Simple Assault



C7: Juvenile Larcenies



Risk Factor Data
compiled by Comprehensive Strategy for Positive Youth Development

Risk Factor - Availability of Drugs

Access to Alcohol and Other Drugs	Source	Area	2007	2008	2009	2010	2011	2012	2013	2014	2015	2016	2017	2018
Youth Say Difficult to Access Alcohol	A	Tri	34%	34%	36%	37%	40%	39%	*	44%	*	45%	*	53%
Youth Say Difficult to Access Tobacco	A	Tri	43%	44%	47%	46%	50%	50%	*	56%	*	57%	*	62%
Youth Say Difficult to Access Marijuana	A	Tri	58%	59%	60%	61%	63%	62%	*	67%	*	66%	*	67%
Youth Say Difficult to Access Meth	A	Tri	80%	81%	83%	86%	85%	86%	*	87%	*	89%	*	88%
<i>Note: Youth Survey every other year beginning in 2012</i>														
Compliance Checks	Source	Area	2007	2008	2009	2010	2011	2012	2013	2014	2015	2016	2017	2018
Compliance Checks - Tobacco	N	WC	218	292	248	234	122	121	109	131	138	118	131	NYA
Compliance Rate - Tobacco	N	WC	84%	91%	93%	91%	91%	95%	99%	95%	90%	86%	84%	NYA
Compliance Rate - Tobacco	N	IA	89%	92%	92%	93%	92%	92%	93%	93%	91%	91%	91%	NYA
Compliance Rate - Tobacco	SCPD	SC									89%	85%	89%	NYA
Compliance Rate - Alcohol	SCPD	SC									87%	83%	89%	NYA
Quantity of Drugs Seized-grams:	Source	Area	2007	2008	2009	2010	2011	2012	2013	2014	2015	2016	2017	2018
Crack	H	Tri	413	716	266	200	265	82	107	6	0	0	0	NYA
Cocaine	H	Tri	3,917	479	90	189	168	20	0	72	0	1,026.6	18,593.2	NYA
Methamphetamine	H	Tri	3,968	15,659	4,631	3,636	3,386	12,107	16,481	11,875	6,509	39,158	67,022.5	NYA
Marijuana	H	Tri	81,507	209,441	169,456	46,483	12,756	80,300	37,367	78,367	7,359	5,806	118,989.5	NYA
Heroin	H	Tri											2,016.0	NYA
Around Other Teens Using in the Past Year	Source	Area	2007	2008	2009	2010	2011	2012	2013	2014	2015	2016	2017	2018
Alcohol-10th Graders	A	Tri	68%	55%	61%	54%	49%	47%	*	39%	*	35%	*	30%
Alcohol-8th Graders	A	Tri	51%	42%	43%	39%	34%	32%	*	31%	*	21%	*	30%
Marijuana-10th Graders	A	Tri	44%	48%	46%	46%	46%	44%	*	38%	*	39%	*	32%
Marijuana-8th Graders	A	Tri	29%	32%	32%	33%	31%	32%	*	34%	*	23%	*	30%
Methamphetamine-10th Graders	A	Tri	19%	11%	10%	7%	8%	8%	*	7%	*	5%	*	6%
Methamphetamine-8th Graders	A	Tri	7%	6%	7%	6%	6%	7%	*	6%	*	3%	*	5%
Newborn Drug Tests	Source	Area	2007	2008	2009	2010	2011	2012	2013	2014	2015	2016	2017	2018
Number Tested	J	WC	455	472	449	440	298	238	237	371	361	436	472	NYA
Newborns tested positive for drugs	J	WC	9	10	10	32	14	10	24	42	86	75	80	NYA
% positive tests	J	WC	1.5%	2.1%	2.2%	7.3%	4.7%	4.2%	10.1%	11.3%	23.8%	17.8%	16.9%	NYA
% of Tests to Total Resident Births	J	WC	28.1%	28.2%	28.1%	28.4%	17.0%	15.8%	15.4%	23.8%	24.3%	21.3%	33.4%	NYA

Source: Siouxland CARES Greater Sioux City Metro Area Youth Survey; Tri-State Drug Task Force, Unity Point Health - St. Luke's and Mercy Sioux City

Risk Factor Data
compiled by Comprehensive Strategy for Positive Youth Development

Risk Factor - Early Initiative of the Problem Behavior

Early Initiation of the Problem Behavior	Source	Area	2007	2008	2009	2010	2011	2012	2013	2014	2015	2016	2017	2018
Delinquency Petitions Filed	D	WC	187	220	209	170	250	227	204	187	150	187	151	NYA
Delinquency Adjudications	D	WC	100	70	89	70	71	62	68	60	43	63	47	NYA
Juvenile Arrests-Total #	G	WC	1,622	1,806	1,572	1,491	1,406	1,274	1,096	1,172	1,057	737	NYA	NYA
Juvenile Arrests-Total #	G	IA	22,703	21,001	19,144	17,607	16,815	N/A	N/A	N/A	11,905	11,053	NYA	NYA
Juvenile Detentions - Violent Crimes	Z	WC	31.6%	33.0%	39.5%	29.5%	30.6%	28.8%	24.0%	24.8%	29.2%	28.8%	26.3%	NYA
Juvenile Detentions - Property Crimes	Z	WC	35.7%	38.1%	33.1%	36.3%	38.4%	35.0%	35.3%	29.4%	23.4%	27.2%	38.4%	NYA
Juvenile Detentions - Drugs	Z	WC	35.7%	38.1%	33.1%	36.3%	38.4%	35.0%	19.3%	23.5%	25.5%	19.2%	19.2%	NYA
Juvenile Detentions - Public Order	Z	WC	9.4%	10.0%	14.5%	14.0%	15.3%	15.6%	17.3%	12.4%	9.5%	6.4%	7.1%	NYA
Juvenile Detentions - Other	Z	WC	8.1%	3.4%	3.0%	5.1%	3.6%	4.0%	4.0%	9.8%	12.4%	18.4%	9.1%	NYA
**Other=disorderly conduct, public drunkenness, under age sex, pornography, etc. (2013-2016 WC youth only-prior years may include other county youth)														
Lifetime Prevalence-Ever Used Alcohol-10th	A	Tri	65%	**74%	73%	79%	66%	66%	*	56%	*	52%	*	54%
Lifetime Prevalence-Ever Used Alcohol-10th	B	USA	62%	58%	59%	58%	56%	54%	52%	49%	47%	43%	42.2%	NYA
Lifetime Prevalence-Ever Used Alcohol-8th	A	Tri	45%	**57%	59%	61%	54%	49%	*	48%	*	41%	*	59.8%
Lifetime Prevalence-Ever Used Alcohol-8th	B	USA	39%	39%	37%	36%	33%	30%	28%	27%	26%	23%	23.1%	NYA
Annual Prevalence-Binge Drinking (>5)-10th	A	Tri	39%	32%	35%	33%	28%	25%	*	17%	*	16%	*	10%
Annual Prevalence-Binge Drinking (>5)-10th	B	USA	34%	30%	31%	30%	29%	28%	27%	25%	23%	21%	20.4%	NYA
Annual Prevalence-Binge Drinking (>5)-8th	A	Tri	19%	15%	19%	17%	14%	12%	*	9%	*	4%	*	7%
Annual Prevalence-Binge Drinking (>5)-8th	B	USA	13%	13%	12%	12%	11%	9%	8%	7%	8%	6%	6.4%	NYA
Past 30-day Prevalence-Used Alcohol-10th	A	Tri	38%	37%	32%	30%	27%	25%	*	20%	*	17%	*	13%
Past 30-day Prevalence-Used Alcohol-10th	B	USA	33%	29%	30%	29%	27%	28%	26%	24%	22%	20%	19.7%	NYA
Past 30-day Prevalence-Used Alcohol-8th	A	Tri	24%	24%	21%	19%	17%	14%	*	12%	*	8%	*	8%
Past 30-day Prevalence-Used Alcohol-8th	B	USA	16%	16%	15%	14%	13%	11%	10%	9%	10%	7%	7.3%	NYA

NOTES: **Questions asked differently beginning in 2008 which may account for the increase

Source: Iowa Department of Public Health Vital Statistics; Iowa Department of Public Safety - Uniform Crime Reports, Woodbury County Juvenile Detention; Siouxland CARES Greater Sioux City Metro Youth Survey; Monitoring the Future Survey (for the USA data)

Risk Factor Data
compiled by Comprehensive Strategy for Positive Youth Development

Risk Factor - Economic Deprivation

	Source	Area	2007	2008	2009	2010	2011	2012	2013	2014	2015	2016	2017
Percent unemployment (March)	F/S	WC	3.9%	5.1%	5.3%	6.6%	5.8%	5.5%	5.2%	4.9%	4.2%	3.8%	3.3%
Percent unemployment (March)	F/S	IA	3.3%	5.2%	5.5%	6.1%	5.6%	4.9%	5.2%	4.4%	3.8%	3.8%	3.1%
Percent unemployment (March)	F/S	USA								6.6%	5.5%	5.0%	4.5%
All ages in poverty	X	WC	15.4%	15.0%	14.7%	14.0%	16.7%	17.0%	16.5%	15.5%	14.0%	13.3%	NYA
All ages in poverty	X	IA	11.0%	11.2%	11.8%	11.6%	12.7%	12.7%	12.7%	12.6%	12.2%	11.7%	NYA
All ages in poverty	X	USA								15.6%	14.7%	14.0%	NYA
Under age 18 in poverty	X	WC	22.5%	21.7%	22.2%	21.5%	23.9%	21.9%	22.7%	22.2%	19.6%	18.5%	NYA
Under age 18 in poverty	X	IA	13.7%	14.1%	15.6%	16.2%	17.1%	15.9%	16.0%	16.1%	14.9%	14.6%	NYA
Under age 18 in poverty	X	USA			20.0%	22.0%	23.0%	23.0%	22.0%	21.9%	20.7%	19.5%	NYA
Family poverty- % with children under 18	P	WC	17.6%	17.8%	17.6%	18.7%	19.2%	18.5%	N/A	22.0%	19.1%	16.3%	NYA
Family poverty- % with children under 18	P	IA	12.0%	12.2%	13.6%	14.2%	13.0%	14.9%	15.7%	15.7%	13.3%	13.0%	NYA
% Students Eligible for Free/Reduced Meals	R	SC		49.2%	53.6%	54.2%	55.3%	57.7%	62.4%	66.2%	67.8%	63.1%	58.2%
% Students Eligible for Free/Reduced Meals	R	WC	39.4%	44.2%	43.6%	49.5%	48.6%	49.5%	51.5%	55.3%	58.5%	59.5%	NYA
% Students Eligible For Free/Reduced Meals	R	IA	32.2%	33.4%	34.1%	36.8%	38.2%	39.4%	40.3%	41.1%	41.0%	41.8%	41.3%
% Children Receiving WIC Services	R	WC	37.5%	37.4%	40.3%	42.2%	41.6%	40.6%	39.0%	39.9%	38.1%	37.8%	NYA
% Children Receiving WIC Services	R	IA	27.1%	27.7%	28.8%	28.2%	26.9%	26.6%	25.5%	24.9%	24.3%	26.5%	NYA
Per Capita Income, Average Income/Person	X/S	WC	32,144	34,554	33,674	33,509	34,726	N/A	23,269	23,221	23,630	24,469	NYA
Per Capita Income, Average Income/Person	X/S	IA	36,089	38,220	37,647	38,084	N/A	N/A	27,027	27,621	28,628	28,872	NYA
Median Household Income	X/S	WC	44,494	43,616	43,820	42,672	43,362	43,663	45,678	46,015	46,720	49,010	NYA
Median Household Income	X/S	IA	47,324	49,007	48,065	48,031	49,545	50,997	51,843	52,716	54,843	54,570	NYA
Median Household Income	X/S	USA	50,740	52,029	50,221	50,046	50,502	51,371	54,462	53,657	55,775	55,322	NYA

Source: G&B Goudy and Burke/Iowa Workforce Development/SETA; Census Small Area Income & Poverty Estimates (SAIPE)

NYA - Not Yet Available

Risk Factor Data
compiled by Comprehensive Strategy for Positive Youth Development

Risk Factor	Source	Area	2007-08	2008-09	2009-10	2010-11	2011-12	2012-13	2013-14	2014-15	2015-16	2016-17
Academic Failure-Late Elementary												
ITBS-4th Grade Reading	I	SC		4.8	4.8	4.7	N/A	N/A	5.6	5.2	5.2	5.5
ITBS-4th Grade Math	I	SC		4.6	4.7	4.7	N/A	N/A	5.1	4.8	4.8	4.8
Annual Scores AYP-% Proficient												
Grades 3-5												
Math	I	SC	66.9	69.1	70.9	71.4	76.7	76.8	75.6	73.9	71.4	70.5
Reading	I	SC	65.6	69.3	71.2	69.5	65.5	72.9	69.8	70	67.9	69.0
Grades 6-8												
Math	I	SC	63.5	64.3	65.9	64.9	65.2	61.5	69.5	75.4	74.7	74.0
Reading	I	SC	61.2	61.5	64.3	63.8	69.1	61.4	72.1	72.7	72	71.9
Grade 11												
Math	I	SC	67.4	68.5	71.8	74.4	75.5	73.4	76.8	78.1	73.3	72.3
Reading	I	SC	68.7	68.1	74.8	74.7	84.2	82.4	77.4	78	75.8	73.2
Annual Scores- AYP-% proficient												
Math Proficiency - 4th Grade	I	SC	72	69	71.7	72.6	74.9	78.4	74.6	74.3	68.9	72.0
Math Proficiency - 11th Grade	I	SC	67.4	68.5	71.8	74.4	75.5	73.4	76.8	78.1	73.3	72.3
Reading Proficiency - 4th Grade	I	SC	66.2	70.3	70	73.6	64.9	70.7	71.1	68.2	65.4	69.1
Reading Proficiency - 11th Grade	I	SC	68.7	68.1	74.8	74.7	84.2	82.4	77.4	78	75.8	73.2

Note: The percent of students proficient is calculated from the data submitted for the Adequate Yearly Progress (AYP) Report, not the Annual Progress Report (APR).

Risk Factor Data
compiled by Comprehensive Strategy for Positive Youth Development

Risk Factor	Source	Area	2007	2008	2009	2010	2011	2012	2013	2014	2015	2016	2017
Family History/Family Conflict													
Domestic Violence-Reported Victims	G	WC	566	573	511	565	363	426	433	393	579	566	NYA
Domestic Violence-Reported Victims	G	IA	6,303	6,431	6,549	6,800	6,823	N/A	N/A	N/A	6,408	6,430	NYA
Domestic Violence Arrests	G	WC	248	265	368	383	367	438	442	395	346	326	NYA
Domestic Violence Arrests	G	IA	4,727	4,530	4,678	4,988	4,911	N/A	N/A	N/A	N/A	4,514	NYA
Children Present - Domestic Violence Calls	G	WC	30%	27%	30%	28%	29%	N/A	N/A	N/A	27%	33%	NYA
Children Present - Domestic Violence Calls	G	IA	33%	34%	33%	31%	33%	N/A	N/A	N/A	33%	34%	NYA
Dissolutions of Marriage (1)	C	WC	297	260	214	201	169	71	49	36	33	42	124
Dissolutions of Marriage (1)	C	IA	7,622	7,752	7,285	7,444	7,416	6,715	5,766	4,877	3,785	3,783	5,750
Confirmed Abused Children/1,000	E	WC	20.31	18.33	17.39	19.52	19.08	15.3	18.6	13.7	16.8	16.6	24.2
Confirmed Abused Children/1,000	E	IA	18.3	15.73	17.78	18.00	17.56	16.1	17.27	10.45	11.43	12.2	15.6
Confirmed Abused Children	E	WC	562	507	481	540	464	411	494	350	447	448	654
Confirmed Abused Children	E	IA	12,786	11,003	12,442	12,595	11,747	11,637	12,276	7,425	8,298	8,892	11,236
% children who strongly agree or agree with the statement "There are people living in my home who have a serious alcohol or drug problem"													
6th, 8th, & 11th graders (2)	Q	WC		20%		21%		18%		15%		17%	
6th, 8th, & 11th graders (2)	Q	IA		16%		17%		13%		13%		14%	

Notes:

(1) Dissolution of Marriage: State divorce data is incomplete as some data has not been submitted to them

(2) Iowa Youth Survey taken every two years beginning 2008

Source: Iowa Department of Public Health Vital Statistics; Prevent Child Abuse Iowa; Iowa Youth Survey

Risk Factor Data
compiled by Comprehensive Strategy for Positive Youth Development

Area

WC=Woodbury County
SC=Sioux City
TRI=Tri-State Area
IA=Iowa
USA=United States of America

Data Sources

A--GSC=Siouxland CARES Greater Sioux City Metro Youth Survey
B--Monitoring=Monitoring the Future National Survey
C--Iowa Dept. of Public Health Vital Stats
D--JCS=Juvenile Court Services/Juvenile Detention
E--PCA IA=Prevent Child Abuse Iowa
F--G & B=Goudy and Burke/Iowa Workforce Development/SETA
G--Iowa Dept. of Public Safety-Uniform Crime Report to 2005
Criminal Justice Information Systems from 2006 to present
H--Tri-State Drug Task Force
I--Iowa Dept. of Education
J--UnityPoint Health - St. Luke's/Mercy Sioux City
K--FACITS (US Census Bureau)
L--Sioux City Community School District
M--Iowa Division of Criminal and Juvenile Justice Planning
N--Iowa Division of Alcohol Beverages
P--Census Data
Q--Iowa Youth Survey
R--Iowa Kids Count
S--Iowa Workforce Development
T--National Highway Traffic Safety Administration
V--Dept. of Ed Report Card
V-1--South Dakota Kids Count
W--USDA Economic Research Service
X--Census- SAIPE (Small Area Income & Poverty Estimates)
Y--Dept. of Commerce. Bureau of Economic Analysis, BEA facts
Z--Woodbury County JV Detention Center-Detention Hold Report

www.siouxlandcares.org
www.monitoringthefuture.org
www.idph.iowa.gov/portals/1/userfiles/68/healthstats/vital-stats-2015-

www.pcaiowa.org

<http://www.dps.state.ia.us/commis/ucr/index.shtml>
www.humanrights.iowa.gov

<http://www.educateiowa.gov>

www.siouxcityschools.org
www.humanrights.iowa.gov
<https://abd.iowa.gov/tobacco>
<http://factfinder.census.gov> www.census.gov
www.iowayouthsurvey.iowa.gov
<http://www.cfpciowa.org>
<http://www.iowaworkforce.org/trends/percapita.html>
<http://www.nhtsa.gov>
<http://www.dvschools.com>
<http://datacenter.kidscount.org>
www.ers.usda.gov/data-products.aspx
<http://www.census.gov/did/www/saipe>
<http://bea.gov>

Scott Musel, IDHR, Div. of Criminal and Juvenile Justice Planning

Dakota County Risk Factor Data
compiled by Comprehensive Strategy for Positive Youth Development

Risk Factor	Source	Area	2007	2008	2009	2010	2011	2012	2013	2014	2015	2016	2017
Availability of Drugs													
# Compliance Checks - Tobacco & Alcohol	CARES	DC	19	14	18	36	31	28	42	25	31	31	30
Compliance Rate - Tobacco & Alcohol	CARES	DC	95%	71%	72%	83%	84%	89%	81%	92%	94%	94%	97%
Early Initiation of the Problem Behavior													
Juvenile Arrests-Total #	A	DC	249	274	336	251	312	266	228	155	156	129	96
Juvenile Arrests-Total #	A	NE	15,649	15,700	15,195	14,088	13,134	12,207	10,534	10,351	10,198	9,463	9,858
Adjudicated Youth-Total #	A/J	DC	173	184	124	165	199	148	112	103	61	53	64
Liquor Law Violations, <18 years old	H	DC	77	68	90	54	75	72	26	12	24	5	18
DUI <18 years old	H	DC	5	4	1	7	8	8	1	2	0	1	1
Drug Violations <18 years old	H	DC	16	9	21	22	18	30	16	26	26	14	9
Economic Deprivation													
Unemployment Rate, average annual	B	DC	4.0%	4.1%	6.0%	7.3%	5.9%	5.8%	4.7%	3.7%	3.5%	4.2%	4.1%
Unemployment Rate, average annual	B	NE	3.0%	3.3%	4.6%	4.6%	4.4%	4.0%	3.8%	3.3%	3.0%	3.1%	2.9%
All ages in poverty	C	DC	11.8%	14.7%	14.6%	15.5%	12.9%	12.9%	14.4%	14.8%	14.6%	11.4%	NYA
All ages in poverty	C	NE	11.1%	11.1%	12.2%	11.8%	12.9%	17.5%	12.9%	12.3%	12.2%	12.7%	NYA
Under age 18 in poverty	A/C	DC	16.8%	20.5%	20.5%	23.6%	19.7%	22.3%	22.3%	22.1%	20.7%	17.7%	NYA
Under age 18 in poverty	A/C	NE	14.9%	13.4%	15.4%	18.0%	17.6%	17.4%	17.1%	16.0%	15.9%	13.9%	NYA
Median Income, Household	C	DC	44,002	43,813	42,192	43,729	47,273	46,582	45,631	50,289	49,093	52,336	NYA
Median Income, Household	C	NE	47,072	49,731	47,470	49,342	50,281	50,766	51,502	52,803	55,073	54,384	NYA
% Students Eligible for Free/Reduced Meals	G	SSC	54.1%	58.3%	63.2%	67.6%	68.3%	72.2%	66.5%	66.3%	64.6%	66.2%	63.5%
% Students Eligible for Free/Reduced Meals	A	DC	33%	51%	53%	53%	64%	65%	68.9%	69.5%	68.5%	56.5%	60.3%
% Students Eligible For Free/Reduced Meals	G	NE	37.3%	38.4%	41.2%	42.6%	43.8%	44.2%	44.9%	44.2%	44.1%	44.7%	NYA
Families Receiving Aid-Dependent Child Assistance	A	DC	109	90	102	132	126	101	94	88	89	101	NYA
Families Receiving Aid-Dependent Child Assistance	A	NE	10,313	8,994	8,621	9,126	9,126	7,783	7,213	6,548	6,063	5,710	NYA

Source: Siouxland CARES; Nebraska Kids Count; USDA Econmic Research Center; Census Small Area Income & Poverty Estimates (SAIPE);
Nebraska Department of Education; Nebraska Crime Commission

Dakota County Risk Factor Data
compiled by Comprehensive Strategy for Positive Youth Development

Risk Factor	Source	Area	2007	2008	2009	2010	2011	2012	2013	2014	2015	2016	2017
Family History/Family Conflict													
# Arrests for Simple Domestic Assaults	H	DC	48	52	47	34	23	45	33	40	29	50	39
# Arrests for Simple Domestic Assaults	H	NE	2,790	2,976	2,841	2,279	2,720	2,645	2,850	2,915	5,064	4,133	2,123
# Arrests for Aggravated Domestic Assaults	H	DC	1	6	5	4	5	10	8	6	3	21	9
# Arrests for Aggravated Domestic Assaults	H	NE	321	328	305	305	325	327	306	443	1,048	1,014	517
# Teen Births, < 20 years old	F/I	DC	52	51	53	44	34	39	29	33	34	22	NA
# Teen Births, <20 years old	F/I	NE	2,303	2,311	2,236	1,975	1,745	1,688	1,564	1,411	1,397	1,227	NA
# Births Total	F/I	DC	419	399	408	391	333	399	355	367	360	355	NA
# Births Total	F/I	NE	26,935	26,992	26,931	25,916	25,722	25,939	26,094	26,794	26,678	26,594	NA
Academic Indicators													
% of English Language Learners	G	SSC	24.67	23.63	22.12	23.33	21.80	18.46	13.98	12.15	13.44	12.15	13.98
% of English Language Learners	G	NE	6.47	6.31	6.56	6.72	6.47	5.96	6.04	6.2	6.09	6.20	6.04
% of Students Receiving Special Ed Services	G	SSC	14.33	13.46	13.30	14.05	12.12	12.58	14.22	12.66	13.17	12.66	14.22
% of Students Receiving Special Ed Services	G	NE	15.18	14.92	14.87	14.91	15.03	14.6	15.74	14.71	14.71	14.71	15.74
School Mobility Rate - %	G	SSC	17.64	16.22	16.35	15.76	13.42	13.48	16.58	15.41	17.23	15.41	16.58
School Mobility Rate - %	G	NE	12.38	12.02	11.89	12.22	11.84	11.35	12.1	12.25	11.24	12.54	12.10

NOTES: NA indicates "not available" at time of report (9/2018)

Data Sources

DC-A - Nebraska Kids Count

www.voicesforchildren.com

DC-B - USDA Economic Research Service

www.usda.gov

DC-C - Census- SAIPE (Small Area Income and Poverty Estimates)

www.census.gov/did/www/saipe/

DC-D - Fact Finder (U.S. Census Data)

www.census.gov

DC-F -Nebraska Vital Statistics

www.dhhs.ne.gov

DC-G - Nebraska Dept. of Education, (State of the Schools Report Card)

www.education.ne.gov

DC-H -Nebraska Crime Commission

www.ncc.nebraska.gov

DC-I-Nebraska Dept. of Health & Human Svcs.

www.dhhs.ne.gov

Mark Miller (402) 471-0355

DC-J - Nebraska Supreme Court Juvenile Justice Report

www.https://supremecourt.nebraska.gov/

County Health Rankings - Woodbury County, Iowa

	2018			2017			2016			2015			2014			2013			2012		
	Woodbury	Iowa	Rank	Woodbury	Iowa	Rank	Woodbury	Iowa	Rank	Woodbury	Iowa	Rank	Woodbury	Iowa	Rank	Woodbury	Iowa	Rank	Woodbury	Iowa	Rank
Health Outcomes			87			88			89			72			76			76			74
Length of Life			65			69			73			62			75			75			68
Premature death	6,700	5,900		6,800	5,900		7,000	5,900		6,653	5,911		6,680	5,971		6,680	5,971		6,646	6,012	
Quality of Life			90			91			97			80			72			76			79
Poor or fair health days	16%	13%		14%	12%		16%	12%		14%	11%		14%	11%		13%	11%		13%	12%	
Poor physical Health days	3.4	2.9		3.3	3		3.5	3		3.4	2.8		3.4	2.8		3.1	2.8		3.2	2.8	
Poor mental health days	3.4	3.3		3.4	3.3		3.1	2.9		2.5	2.6		2.5	2.60%		2.6	2.7		2.6	2.7	
Low birthweight	7%	7%		7%	7%		7%	7%		7.20%	6.80%		7%	6.80%		7.50%	6.90%		7.50%	6.80%	
Health Factors			88			93			96			93			95			97			96
Health Behaviors			92			97			97			98			97			94			97
Adult Smoking	17%	17%		19%	18%		20%	17%		23%	18%		23%	18%		24%	18%		25%	19%	
Adult Obesity	35%	32%		34%	31%		34%	31%		32%	30%		31%	29%		31%	29%		31%	29%	
Food environment index	7.9	8.2		7.1	7.8		7.2	7.8		7	7.8		7.2	8.1							
Physical inactivity	28%	25%		27%	24%		27%	25%		27%	24%		29%	25%		30%	25%		30%	25%	
Access to exercise opportunities	94%	83%		92%	76%		92%	76%		93%	79%		85%	75%							
Excessive drinking	19%	22%		19%	21%		20%	20%		20%	20%		20%	20%		20%	20%		20%	20%	
Alcohol-impaired driving deaths	26%	27%		27%	25%		26%	24%		39%	23%		37%	21%							
Sexually transmitted infections	535.8	388.9		564	382		517	356		561.00	370.00		476.00	350.00		466.00	346.00		426.00	313.00	
Teen births	35	22		43	27		45	28		48	30		49	31		51	32		53	33	
Clinical Care			69			73			67			68			74			80			73
Uninsured	8%	6%		11%	7%		13%	10%		13%	10%		14%	10%		15%	11%		14%	10%	
Primary Care physicians	1,510:1	1,360:1		1,460:1	1,350:1		1,570:1	1,350:1		1,705:1	1,375:1		1,602:1	1,386:1		1,678:1	1,395:1		1,593:1	1,492:1	
Dentists	1,490:1	1,560:1		1,510:1	1,600:1		1,550:1	1,630:1		1,596:1	1,670:1		1,624:1	1,683:1		1,706:1	1,766:1				
Mental Health providers	500:1	760:1		580:1	820:1		670:1	830:1		745:1	904:1		914:1	1,144:1							
Preventable hospital stays	49	49		46	48		47	51		53	56		57	61		62	60		60	63	
Diabetic Monitoring	91%	90%		91%	90%		90%	90%		91%	89%		89%	89%		89%	89%		87%	88%	
Mammography screening	63%	69%		63%	69%		60%	67%		58.90%	66.40%		58.10%	66.80%		61.50%	69.10%		63.50%	70.50%	
Social & Economic Factors			81			85			81			84			84			88			92
High School graduation	89%	90%		89%	90%		89%	89%		87%	89%		87%	88%		87%	88%		84%	89%	
Some College	59%	70%		59%	70%		59%	69%		57.80%	69.10%		58.80%	69%		56.40%	67.90%		55.70%	66.70%	
Unemployment	3.60%	3.70%		3.70%	3.70%		4.50%	4.40%		4.50%	4.60%		5.30%	5.20%		5.90%	5.90%		6.60%	6.10%	
Children in poverty	19%	15%		20%	15%		21%	16%		23%	16%		22%	16%		24%	17%		22%	16%	
Income inequality	4.1	4.2		4.2	4.3		4.2	4.2		4.3	4.2			16%							
Children in single-parent households	40%	29%		40%	29%		38%	29%		38%	29%		35%	28%		34%	27%		33%	27%	
Social Associations	14	15.2		14.1	15.3		14.2	22.1		14.3	15.6										
Violent crime	326	270		326	270		331	263		331	263		351	268		342	280		373	291	
Injury deaths	62	65		63	63		60	60		56	59		53	56							
Physical Environment			76			95			97			82			99			99			90
Air pollutions - particulate matter	9.8	9.6		9.8	9.6		11.1	10.9		11.1	10.9		11.1	10.9		9.7	10.3				
Drinking water violations	No			Yes			Yes			0%	7%		44%	5%		88%	5%				
Severe housing problems	14%	12%		14%	12%		14%	12%		14%	12%		13%	12%							
Driving alone to work	83%	81%		83%	81%		81%	80%		81%	80%		81%	79%							
Long Commute - driving alone	14%	20%		13%	20%		13%	19%		14%	19%		13%	19%							

Source: County Health Rankings, Updated 2018; <http://www.countyhealthrankings.org/>; Robert Wood Johnson Foundation

Indicates improvement from 2017

Note: Better to compare indicator trends from year to year rather than overall rankings year to year.

**National County Health Rankings
Updated 2018**

County Health Rankings - Dakota County, Nebraska

	2018			2017			2016			2015			2014			2013			2012		
	Dakota	Neb	Rank	Dakota	Neb	Rank	Dakota	Neb	Rank	Dakota	Neb	Rank	Dakota	Neb	Rank	Dakota	Neb	Rank	Dakota	Neb	Rank
Health Outcomes			54			47			43			52			54			46			64
Length of Life			26			21			24			21			19			19			64
Premature death	5,900	6,000		5,800	5,900		5,600	5,800		5,515	5,792		5,459	5,904		5,459	5,904		6,944	5,466	
Quality of Life			70			68			66			68			69			65			67
Poor or fair health days	19%	14%		19%	13%		17%	13%		19%	12%		19%	12%		19%	12%		17%	12%	
Poor physical Health days	3.4	3.2		3.5	3.1		3.2	2.9		3.1	2.9		3.1	2.9		3.2	2.9		3.1	2.9	
Poor mental health days	3.1	3.2		2.8	3		3	2.8		3.5	2.7		3.5	2.7		2.9	2.7		2.8	2.6	
Low birthweight	6%	7%		6%	7%		6%	7%		6.10%	7.00%		6%	7.00%		6.50%	7.10%		7.10%	7.00%	
Health Factors			79			77			77			77			78			78			78
Health Behaviors			73			70			74			68			74			78			78
Adult Smoking	19%	17%		17%	17%		18%	17%		21%	18%		21%	18%		21%	18%		22%	19%	
Adult Obesity	36%	31%		36%	30%		34%	30%		34%	29%		34%	29%		35%	29%		35%	29%	
Food environment index	8.6	8.1		8.2	7.6		8	7.7		7.7	7.8		7.9	8.1							
Physical inactivity	29%	23%		27%	22%		29%	24%		29%	24%		31%	25%		30%	25%		31%	25%	
Access to exercise opportunities	89%	83%		85%	80%		85%	80%		84%	81%		50%	75%							
Excessive drinking	17%	21%		16%	20%		19%	21%		19%	20%		19%	20%		20%	19%		19%	19%	
Alcohol-impaired driving deaths	18%	37%		23%	36%		17%	35%		0%	35%		17%	36%							
Sexually transmitted infections	330.9	422.9		377.1	401.3		310.7	393.5		72.00	364.00		86.00	368.00		138.00	280.00		253.00	305.00	
Teen births	42	25		51	29		55	31		56	32		51	33		55	34		56	36	
Clinical Care			79			73			73			74			72			74			76
Uninsured	16%	9%		17%	11%		20%	13%		19%	13%		20%	13%		20%	13%		19%	13%	
Primary Care physicians	20,780:1	1,340:1		20,850:1	1,330:1		20,950:1	1,350:1		20,918:1	1,405:1		20,913:1	1,404:1		10,525:1	1,413:1		10,170:1	1,057:1	
Dentists	2,920:1	1,360:1		2,970:1	1,390:1		4,170:1	1,420:1		4,189:1	1,450:1		4,184:1	1,493:1		4,210:1	1,625:1				
Mental Health providers	490:1	420:1		470:1	440:1		410:1	410:1		427:1	435:1		634:1	560:1							
Preventable hospital stays	72	48		51	47		62	51		60	56		58	64		66	65		74	66	
Diabetic Monitoring	87%	87%		87%	87%		88%	86%		93%	86%		90%	85%		90%	85%		87%	84%	
Mammography screening	57%	62%		57%	62%		50%	62%		47.60%	61.80%		51.50%	62.30%		53.10%	65.00%		53.60%	66.00%	
Social & Economic Factors			79			77			77			77			78			78			78
High School graduation	84%	87%		84%	87%		86%	87%		89%	86%		86%	85%		88%	88%		86%	86%	
Some College	43%	71%		40%	70%		37%	70%		40.50%	70.00%		38.40%	70%		37.20%	69.20%		38.00%	96.60%	
Unemployment	4.30%	3.20%		3.50%	3.00%		5.30%	3.40%		6.90%	3.90%		6.20%	3.90%		6.30%	4.40%		8.00%	4.70%	
Children in poverty	18%	14%		21%	16%		22%	16%		22%	17%		22%	17%		20%	18%		20%	17%	
Income inequality	4.2	4.3		4.5	4.3		4.5	4.2		4.1	4.2										
Children in single-parent household	24%	29%		27%	29%		30%	29%		33%	28%		31%	28%		31%	27%		31%	26%	
Social Associations	8.7	13.9		9.6	14.1		9.5	14.3		10	14.2										
Violent crime	130	267		130	267		114	264		114	264		113	271		109	291		83	307	
Injury deaths	49	58		50	27		51	54		47	54		45	54							
Physical Environment			74			75			77			56			44			46			62
Air pollutions - particulate matter	9.6	8.2		9.6	8.2		11.3	12.1		11.3	9.5		11.3	12.1		9.8	9.4				
Drinking water violations	No			Yes			Yes			2%	8%		0%	10%		0%	11%				
Severe housing problems	18%	13%		17%	13%		16%	13%		16%	13%		15%	13%							
Driving alone to work	82%	81%		82%	81%		83%	81%		80%	81%		77%	80%							
Long Commute - driving alone	9%	18%		10%	18%		11%	17%		12%	17%		13%	17%							

Source: County Health Rankings, Updated 2018; <http://www.countyhealthrankings.org/>; Robert Wood Johnson Foundation

Indicates improvement from 2017

Note: Better to compare indicator trends from year to year rather than overall rankings year to year.

Siouxland CARES Greater Sioux City Metro Area Youth Survey - All Grades Combined Summary

Students in grades 6, 8, 10 & 12 participated in the survey from the following schools districts: Sioux City Community, Sioux City Catholic, Sergeant Bluff-Luton, Dakota Valley, Woodbury Central, River Valley, Lawton-Bronson, and South Sioux City. Dakota Valley did not participate in 2003 and in 2008. The 6th & 8th graders in the Catholic Schools did not participate in 2003 because they participated in a survey for a national research project. Only four school districts participated in 1999. 12th graders at Dakota Valley did not participate in 2014. River Valley did not participate in 2016. Sgt. Bluff did not participate in 2018.

# of Students	1,658	4,511	4,640	4,681	4,151	5,025	4,631	4,614	4,252	4,807	4,741	4,729	4,915	5,186	4,383	4,326	3,924
All Grades Combined																	
Questions	1999	2000	2001	2002	2003	2004	2005	2006	2007	2008	2009	2010	2011	2012	2014	2016	2018
Yes, Difficult to get alcohol (beer, wine, coolers, or liquor)	27%	30%	30%	31%	31%	34%	34%	34%	34%	34%	36%	37%	40%	39%	44%	45%	54%
Difficult to get tobacco (cigarettes, cigars, smokeless tobacco)	25%	35%	34%	35%	37%	41%	41%	42%	43%	44%	47%	46%	50%	50%	56%	57%	62%
Difficult to get marijuana	45%	52%	50%	50%	50%	54%	55%	56%	58%	59%	60%	61%	63%	62%	67%	66%	67%
Difficult to get methamphetamine	66%	74%	72%	73%	75%	76%	75%	76%	80%	81%	83%	86%	85%	86%	87%	89%	88%
Difficult to get cocaine	67%	73%	72%	72%	74%	75%	74%	76%	79%	78%	80%	84%	84%	85%	87%	87%	86%
Difficult to get electronic cigarettes (vaping, e-cigs)																	56%
	1999	2000	2001	2002	2003	2004	2005	2006	2007	2008	2009	2010	2011	2012	2014	2016	2018
Yes, Harmful-two or more drinks every day	66%	69%	68%	69%	67%	69%	69%	65%	73%	72%	69%	73%	74%	75%	77%	78%	79%
Harmful-smoke more than a pack of cigarettes daily	91%	91%	90%	90%	92%	91%	90%	89%	92%	90%	87%	93%	93%	94%	94%	94%	95%
Harmful-use smokeless tobacco	84%	85%	83%	84%	85%	84%	83%	83%	86%	84%	81%	85%	87%	86%	84%	86%	85%
Harmful-smoke marijuana	81%	84%	81%	80%	83%	82%	81%	80%	83%	82%	76%	80%	80%	79%	76%	74%	71%
Harmful-use methamphetamine	92%	93%	91%	90%	93%	91%	90%	90%	93%	91%	86%	94%	95%	95%	94%	94%	95%
Most often use between 2:00 p.m. and 6:00 p.m.	10%	10%	11%	10%	10%	10%	10%	11%	10%	17%	6%	6%	6%	5%	4%	4%	3%
Most often use between 6:00 p.m. and midnight	39%	33%	37%	35%	37%	34%	33%	32%	32%	41%	22%	22%	18%	18%	13%	12%	9%
Use at home	20%	17%	18%	18%	18%	17%	17%	15%	16%	21%	11%	10%	9%	9%	7%	7%	6%
Use at school	8%	7%	8%	7%	7%	6%	7%	6%	7%	11%	4%	3%	3%	3%	2%	2%	2%
Use at a friend's house	40%	33%	34%	32%	35%	33%	32%	30%	31%	38%	22%	21%	18%	16%	12%	11%	6%
Use in a car or other vehicle	23%	19%	20%	19%	19%	18%	18%	16%	17%	23%	12%	10%	10%	9%	7%	6%	6%
Annual Prevalence-Binge Drinking (Never in Past Year)	63%	68%	66%	70%	69%	70%	72%	72%	72%	77%	76%	78%	82%	82%	89%	90%	92%
Annual Prevalence-12th	36%	41%	37%	42%	38%	44%	46%	45%	42%	52%	50%	59%	63%	83%	71%	77%	80%
Annual Prevalence-10th	46%	48%	47%	50%	55%	56%	54%	57%	61%	68%	65%	67%	72%	75%	83%	84%	90%
Annual Prevalence-8th	74%	71%	77%	79%	73%	76%	79%	81%	81%	85%	81%	83%	86%	88%	91%	96%	93%
Annual Prevalence-6th	89%	93%	90%	95%	94%	94%	95%	94%	95%	96%	95%	95%	96%	97%	99%	97%	97%
Annual Prevalence-Tobacco-Never Used in Past Year	58%	67%	67%	74%	74%	76%	76%	78%	79%	82%	82%	81%	85%	86%	90%	93%	94%
Annual Prevalence-12th	46%	52%	47%	56%	55%	62%	63%	64%	61%	69%	66%	68%	72%	74%	82%	88%	90%
Annual Prevalence-10th	47%	52%	56%	65%	69%	68%	68%	71%	74%	76%	78%	76%	81%	81%	88%	90%	93%
Annual Prevalence-8th	62%	66%	72%	74%	71%	78%	77%	80%	83%	84%	81%	82%	86%	89%	88%	93%	94%
Annual Prevalence-6th	75%	86%	83%	91%	89%	91%	91%	91%	93%	94%	95%	93%	93%	94%	96%	97%	98%

Questions	1999	2000	2001	2002	2003	2004	2005	2006	2007	2008	2009	2010	2011	2012	2014	2016	2018
Annual Prevalence-Marijuana-Never Used in Past Year	75%	80%	78%	79%	79%	81%	82%	81%	83%	84%	84%	84%	85%	85%	88%	89%	90%
Annual Prevalence-12th	64%	70%	63%	64%	62%	67%	72%	68%	67%	70%	69%	74%	73%	73%	78%	80%	79%
Annual Prevalence-10th	59%	67%	63%	66%	68%	71%	70%	72%	76%	77%	78%	77%	76%	79%	81%	82%	85%
Annual Prevalence-8th	81%	80%	84%	82%	79%	83%	84%	85%	84%	88%	85%	84%	87%	88%	88%	92%	91%
Annual Prevalence-6th	94%	96%	93%	97%	96%	96%	97%	96%	97%	97%	97%	96%	97%	97%	98%	98%	98%
Past 30-Day Prevalence-Alcohol-Never Used (Composite)	*30 Day Prevalence			67%	65%	68%	69%	70%	70%	72%	76%	77%	80%	81%	86%	88%	90%
Past 30-Day Prevalence-12th	began in 2002			42%	41%	46%	46%	48%	44%	50%	53%	60%	65%	61%	69%	74%	78%
Past 30-Day Prevalence-10th				50%	52%	57%	55%	57%	62%	63%	68%	70%	73%	75%	80%	83%	87%
Past 30-Day Prevalence-8th				71%	66%	70%	73%	75%	76%	76%	79%	81%	83%	86%	88%	92%	92%
Past 30-Day Prevalence-6th				91%	89%	91%	91%	90%	90%	92%	92%	91%	92%	93%	95%	96%	96%
Past 30-Day Prevalence-Binge Drinking-Never Done-5 or > drinks in a row				78%	79%	80%	80%	80%	82%	83%	85%	86%	89%	89%	94%	94%	96%
Past 30-Day Prevalence-12th		(Composite)		56%	55%	58%	58%	60%	59%	62%	64%	70%	76%	73%	81%	85%	88%
Past 30-Day Prevalence-10th				63%	70%	70%	69%	70%	73%	76%	78%	81%	84%	85%	89%	92%	95%
Past 30-Day Prevalence-8th				85%	82%	86%	85%	88%	89%	90%	88%	90%	92%	94%	96%	98%	96%
Past 30-Day Prevalence-6th				97%	96%	97%	96%	97%	97%	98%	97%	97%	97%	98%	99%	98%	98%
Past 30-Day Prevalence-Cigarettes-Never Used (Composite)				81%	82%	83%	83%	85%	85%	86%	87%	87%	89%	90%	94%	95%	97%
Past 30-Day Prevalence-12th				66%	66%	71%	71%	75%	72%	75%	74%	77%	79%	79%	86%	91%	92%
Past 30-Day Prevalence-10th				73%	79%	78%	76%	79%	80%	82%	85%	85%	87%	88%	91%	93%	96%
Past 30-Day Prevalence-8th				82%	80%	85%	84%	87%	88%	89%	87%	88%	91%	93%	94%	97%	97%
Past 30-Day Prevalence-6th				94%	93%	94%	95%	94%	95%	96%	97%	96%	95%	97%	98%	98%	99%
Past 30-Day Prevalence-Smokeless Tobacco-Never Used (Composite)				94%	94%	94%	93%	94%	94%	94%	94%	95%	95%	96%	96%	96%	97%
Past 30-Day Prevalence-12th				87%	90%	88%	85%	88%	89%	90%	85%	90%	90%	90%	87%	92%	94%
Past 30-Day Prevalence-10th				90%	92%	92%	92%	92%	92%	91%	91%	95%	92%	94%	92%	94%	96%
Past 30-Day Prevalence-8th				96%	95%	96%	95%	97%	97%	96%	96%	97%	97%	97%	97%	98%	98%
Past 30-Day Prevalence-6th				99%	98%	98%	98%	99%	98%	99%	99%	99%	98%	99%	100%	99%	99%
Past 30-Day Prevalence-Marijuana-Never Used (Composite)				86%	85%	87%	88%	87%	88%	89%	89%	90%	89%	91%	93%	93%	93%
Past 30-Day Prevalence-12th				75%	76%	79%	81%	78%	79%	81%	80%	84%	80%	83%	88%	88%	85%
Past 30-Day Prevalence-10th				76%	79%	80%	80%	82%	83%	83%	85%	85%	84%	87%	87%	89%	89%
Past 30-Day Prevalence-8th				87%	85%	88%	89%	88%	89%	92%	88%	89%	90%	92%	93%	95%	94%
Past 30-Day Prevalence-6th				98%	96%	97%	98%	97%	98%	98%	98%	97%	97%	98%	99%	99%	98%
Past 30-Day Prevalence-E-Cig-Never Used (Composite)																	90%
Past 30-Day Prevalence-12th																	78%
Past 30-Day Prevalence-10th																	87%
Past 30-Day Prevalence-8th																	92%
Past 30-Day Prevalence-6th																	96%

Questions	1999	2000	2001	2002	2003	2004	2005	2006	2007	2008	2009	2010	2011	2012	2014	2016	2018
Past 30-Day Prevalence-Methamphetamine-Never Used (Composite)				97%	97%	97%	97%	97%	98%	97%	97%	98%	98%	98%	98%	99%	98%
Past 30-Day Prevalence-12th				96%	94%	95%	96%	95%	96%	96%	94%	98%	96%	97%	94%	96%	97%
Past 30-Day Prevalence-10th				95%	97%	98%	96%	96%	96%	96%	96%	98%	97%	98%	98%	99%	99%
Past 30-Day Prevalence-8th				98%	97%	97%	97%	98%	98%	98%	98%	98%	98%	99%	99%	99%	98%
Past 30-Day Prevalence-6th				99%	99%	98%	99%	99%	100%	99%	99%	99%	99%	99%	100%	99%	99%
Past 30-Day Prevalence-Cocaine-Never Used (Composite)				97%	97%	97%	97%	97%	97%	96%	97%	98%	98%	98%	98%	99%	99%
Past 30-Day Prevalence-12th				94%	95%	96%	96%	95%	94%	94%	94%	97%	96%	97%	94%	97%	97%
Past 30-Day Prevalence-10th				95%	96%	97%	96%	97%	95%	95%	95%	98%	97%	97%	98%	98%	99%
Past 30-Day Prevalence-8th				98%	98%	98%	96%	98%	97%	97%	98%	98%	98%	99%	99%	99%	99%
Past 30-Day Prevalence-6th				99%	99%	98%	99%	99%	99%	99%	99%	99%	99%	99%	99%	99%	99%
Past 30-Day Prevalence-Inhalants-Never Used (Composite)				95%	94%	95%	95%	94%	94%	95%	95%	95%	96%	97%	97%	98%	98%
Past 30-Day Prevalence-12th				96%	94%	95%	96%	95%	95%	96%	94%	96%	96%	97%	95%	97%	97%
Past 30-Day Prevalence-10th	*30 Day Prevalence			94%	95%	97%	95%	94%	94%	94%	94%	97%	96%	97%	98%	98%	98%
Past 30-Day Prevalence-8th	began in 2002			94%	93%	93%	94%	94%	93%	94%	95%	95%	96%	96%	98%	98%	98%
Past 30-Day Prevalence-6th				96%	95%	96%	95%	94%	95%	97%	97%	95%	96%	97%	98%	98%	99%
In the Past Year, Ridden in Car-Driver Using AOD-12th	61%	54%	60%	55%	57%	52%	49%	49%	49%	45%	41%	32%	32%	32%	24%	20%	22%
In the Past Year, Ridden in Car-Driver Using AOD-10th	57%	47%	56%	53%	54%	50%	48%	44%	46%	38%	37%	34%	31%	28%	22%	21%	20%
In the Past Year, Driven a Car After Using AOD-12th	49%	41%	47%	42%	44%	39%	36%	39%	38%	33%	32%	29%	27%	27%	20%	14%	13%
In the Past Year, Driven a Car After Using AOD-10th	27%	28%	28%	28%	26%	25%	25%	24%	21%	19%	19%	22%	18%	16%	12%	13%	8%
Never Around Other Teens Using Alcohol In Past Year-12th	12%	16%	13%	20%	15%	24%	24%	22%	23%	30%	30%	42%	46%	45%	50%	58%	65%
Never Around Other Teens Using-Alcohol-10th	16%	17%	16%	22%	21%	24%	27%	30%	32%	45%	39%	46%	51%	53%	61%	65%	70%
Never Around Other Teens Using-Alcohol-8th	34%	37%	39%	44%	38%	45%	50%	54%	49%	58%	57%	61%	66%	68%	69%	79%	73%
Never Around Other Teens Using-Marijuana-12th	30%	37%	30%	40%	35%	45%	48%	45%	53%	37%	44%	54%	54%	52%	59%	57%	64%
Never Around Other Teens Using-Marijuana-10th	33%	37%	35%	40%	43%	46%	48%	51%	56%	52%	54%	54%	54%	56%	62%	61%	68%
Never Around Other Teens Using-Marijuana-8th	61%	60%	63%	66%	60%	65%	70%	73%	71%	68%	68%	67%	69%	68%	66%	77%	70%
Never Around Other Teens Using-Meth-12th	78%	87%	84%	86%	88%	88%	89%	90%	88%	89%	89%	94%	93%	92%	90%	94%	93%
Never Around Other Teens Using-Meth-10th	79%	84%	84%	87%	88%	92%	87%	90%	90%	89%	90%	93%	92%	92%	93%	95%	94%
Never Around Other Teens Using-Meth-8th	88%	90%	91%	92%	92%	89%	91%	92%	93%	94%	93%	94%	94%	93%	94%	97%	95%
How wrong do your parents feel it would be for you to:	New questions in 2008			2002	2003	2004	2005	2006	2007	2008	2009	2010	2011	2012	2014	2016	2018
To Drink Alcohol--Very Wrong/Wrong										79%	79%	81%	81%	82%	84%	82%	80%
To Drink Alcohol regularly (at least twice a month)--Wrong/Very Wrong										86%	86%	88%	88%	89%	90%	89%	89%
To smoke cigarettes--Wrong/Very Wrong										90%	90%	91%	92%	93%	94%	94%	94%
To smoke marijuana--Wrong/Very Wrong										93%	94%	94%	94%	94%	94%	93%	94%
Never take prescription drugs without prescription in past 30	New questions in 2011												93%	95%	96%	96%	96%
Never take over-the-counter drugs to get high in past 30 days													93%	95%	96%	95%	95%

Siouxland CARES Greater Sioux City Metro Area Youth Survey

Total Participation 2018 = 3,924 Students		Total count	3,872	by grade (3902 with 22 ommiting grade)	% of total (T = 3872)				
		6th Grade	1,195	31% Bishop Heelan	214	5%	EuroAmerican / White	1,171	36%
Males: T = 1951, 51%		8th Grade	1,355	35% Dakota Valley	43	1%	African American	187	6%
Females: T = 1902, 49%		10th Grade	860	22% Lawton Bronson	127	3%	Latino/Hispanic	1,123	34%
Total count = 3853		12th Grade	462	12% River Valley / Correctionville	113	3%	Asian American	147	4%
				Sioux City - all sites	2,340	60%	Native American	124	4%
				S. Sioux City	922	24%	Other/Mixed	539	16%
				Woodby Central / Merville	152	4%		3,291	
				Total count	3,911				
Total Participating in 2016 = 4,326 Students		Gender	Ethnicity						
6th Grade = 1,289 Students	10th Grade = 1,202 Students	Male = 2,201	Euro American = 2,396; African American = 154; Latino/Hispanic = 1,025; Asian American = 167, Native American = 101; Other/Mixed = 483.						
8th Grade = 1,105 Students	12th Grade = 730 Students	Female = 2,125							
Total Participating in 2014 = 4,388 Students				Total Participating in 2009 = 4,741 Students					
Bishop Heelan = 458 Lawton-Bronson = 166 Sioux City = 2,308				Bishop Heelan = 451 Lawton-Bronson = 145 Sioux City = 2,498					
River Valley = 94 South Sioux City = 550 Woodbury Central = 160				River Valley = 128 South Sioux City = 780 Woodbury Central = 160					
Sgt. Bluff-Luton = 361 Dakota Valley = 280 School Unknown = 11				Sgt. Bluff-Luton = 341 Dakota Valley = 238					
6th Graders = 1,444 Students Unknown Grade = 145 students				6th Graders = 1,377 Students Unknown Grade = 70 Students					
8th Graders = 1,360 Students				8th Graders = 1,322 Students Total = 4,741 Students					
10th Graders = 908 Students				10th Graders = 1,226 Students					
12th Graders = 531 Students				12th Graders = 746 Students					
Total Participating in 2012 = 5,186 Students				Total Participating in 2008 = 4,807 Students			Total Participating in 2007 = 4,252 Students		
Bishop Heelan = 447 Lawton-Bronson = 168 Sioux City = 2,640				6th Graders = 1,365 Students			6th Graders = 1,157 Students		
River Valley = 108 South Sioux City = 824 Woodbury Central = 166				8th Graders = 1,227 Students			8th Graders = 1,164 Students		
Sgt. Bluff-Luton = 417 Dakota Valley = 251 School Unknown = 165				10th Graders = 1,280 Students			10th Graders = 1,144 Students		
6th Graders = 1,511 Students Unknown Grade = 83 students				12th Graders = 935 Students			12th Graders = 742 Students		
8th Graders = 1,430 Students Total = 5,186 Students							Unknown grade = 45 Students		
10th Graders = 1,226 Students				Total Participating in 2006 = 4,763 Students			Total Participating in 2005 = 4,631 Students		
12th Graders = 936 Students				6th Graders = 1,303 Students			6th Graders = 1,288 Students		
Total Participating in 2011 = 4,915 Students				8th Graders = 1,217 Students			8th Graders = 1,335 Students		
Bishop Heelan = 430 Lawton-Bronson = 151 Sioux City = 2,452				10th Graders = 1,171 Students			10th Graders = 1,209 Students		
River Valley = 104 South Sioux City = 932 Woodbury Central = 163				12th Graders = 771 Students			12th Graders = 716 Students		
Sgt. Bluff-Luton = 402 Dakota Valley = 281				Unknown grade = 301 Students			Total Participating in 2004 = 5,025 Students		
6th Graders = 1,535 Students Unknown Grade = 128 students				6th Graders = 1,376 Students			6th Graders = 1,276 Students		
8th Graders = 1,354 Students Total = 4,915 Students				8th Graders = 1,412 Students			8th Graders = 1,138 Students		
10th Graders = 1,061 Students				10th Graders = 1,115 Students			10th Graders = 1,080 Students		
12th Graders = 837 Students				12th Graders = 992 Students			12th Graders = 657 Students		
Total Participating in 2010 = 4,729 Students				NOTE: **Numbers may not add up as some students did not identify grade, race/ethnicity, and/or gender. Siouxland CARES is a United Way affiliated agency. Data scanned by Area Education Agency from 1999-2014 and Briar Cliff University Siouxland Research Center in 2016.					
Bishop Heelan = 467 Lawton-Bronson = 189 Sioux City = 2,511									
River Valley = 112 South Sioux City = 716 Woodbury Central = 166									
Sgt. Bluff-Luton = 307 Dakota Valley = 261									
6th Graders = 1,371 Students Unknown Grade = 297 students									
8th Graders = 1,213 Students Total = 4,723 Students									
10th Graders = 1,025 Students									
12th Graders = 817 Students									

Public Data Sources Available in Siouxland

Compiled: Consulting By Design LLC

Rev: September 2018

Public Data Sources Available in Siouxland			
Updated: 9/2018			
Area of Focus	Source	Access	Data Available
Economic Stability	American Community Survey	https://www.census.gov/programs-surveys/acs/	Employment Income Demographics
	Federal Bureau of Labor Statistics	https://www.bls.gov/sae/	Unemployment
	Siouxland Chamber of Commerce	http://siouxlandchamber.com/economic-development/	Cost of Living Economic Development
	South Sioux City Chamber of Commerce	http://southsiouxchamber.org/	Cost of Living Economic Development
	Iowa Workforce Development	http://www.iowaworkforcedevelopment.gov/labor-market-information-division	Cost of Living Economic Development
	Dakota Valley Business Council	http://siouxlandchamber.com/dakota-valley-business-council/	Cost of Living Economic Development
	The Siouxland Initiative		
Area of Focus	Source	Access	Data Available
Neighborhood & Physical Environment	Census	US Census - http://www.census.gov/	Housing
	SIMPCO- Siouxland Interstate Metropolitan Planning Council (Council of Governments)	http://simpco.org/	Transportation Community Development/ Planning- Neighborhoods Economic Development
	Iowa Department of Public Safety	http://www.dps.state.ia.us/commis/ucr/index.shtml http://www.countyhealthrankings.org/ https://www.communitycommons.org/ https://www.cdc.gov/500cities/ https://tracking.idph.iowa.gov/ https://www.cityhealthdashboard.com https://www.healthypeople.gov/2020/data-search/	Crime Safety
	National Low Income Housing	http://nlihc.org/	Housing
	Woodbury County, City of Sioux City, City of South Sioux City		
Area of Focus	Source	Access	Data Available
Education	Iowa Department of Education	https://educateiowa.gov/education-statistics	Student Demographic Information; Student Performance; Staff Data
	Sioux City Community School District	http://www.siouxcityschools.org/	Condition of Education Reports; State Report Cards

Public Data Sources Available in Siouxland

Compiled: Consulting By Design LLC

Rev: September 2018

Area of Focus	Source	Access	Data Available
Education	South Sioux City Community School District	http://www.scccardinals.org/	Non-Student District Data Program Data; Financial Data School District Financial Report Cards; Free and Reduced-Price Lunch
	Additional school districts by request		
Area of Focus	Source	Access	Data Available
Food	US Department of Agriculture	http://www.usda.gov/wps/portal/usda/usdahome	Hunger Access to Healthy Foods
	US Census US Census Bureau Quick Facts	http://quickfacts.census.gov/qfd/index.html	
	USDA Farm to School	http://www.fns.usda.gov/farmtoschool/farm-school	
Area of Focus	Source	Access	Data Available
Health	Iowa State University – Extension and Outreach	http://indicators.extension.iastate.edu/	Health Data
	Centers for Disease Control	http://www.cdc.gov/	Quality of Health Access to Health
	DOH Vital Statistics	http://www.doh.wa.gov/LicensesPermitsandCertificates/BirthDeathMarriageandDivorce	Life Expectancy
	Health Rankings	http://www.countyhealthrankings.org/rankings/data/IA	County Health Rankings
	Siouxland CARES / Comprehensive Strategy	http://siouxlandcares.org/community-data/	Substance Abuse, Teen Pregnancy, Violence, Delinquency, and School Drop Out. Risk Factors data: Availability of Drugs, Early Initiation of the Problem Behavior, Family History / Family Conflict, Extreme Economic Deprivation, and Academic Failure Beginning in Late Elementary School.
	Siouxland District Health	http://www.siouxlanddistricthealth.org https://www.communitycommons.org https://www.cdc.gov/500cities/ https://tracking.idph.iowa.gov/ https://www.cityhealthdashboard.com https://www.healthypeople.gov/2020/data-search/	Disease registries and tracking, immunization, WIC, Healthy People 2020, Healthy planning, Centers for Disease Control
Area of Focus	Source	Access	Data Available
Community & Social Context	American Community Survey	http://www.census.gov/acs/www/	Quality of Life; Social Cohesion; Diversity

Comprehensive Strategy Planning Partners

The following organizations have signed a Statement of Understanding that documents their partnership with Comprehensive Strategy for Positive Youth Development.

All meetings are open to the public. If you would like more information or would like to become a planning partner, please email comprehensivestrategy@gmail.com.

American Red Cross – Siouxland Area Chapter
Beyond the Bell
Big Brothers Big Sisters of Siouxland
Bishop Heelan Catholic High School
BOOST- Bridging and Overcoming Obstacles through Service and Training
Boy Scouts of America-Mid America Council
Boys and Girls Home and Family Services
Boys and Girls Clubs of Siouxland
Boys Town Iowa
Briar Cliff University
Bullying Prevention Community Coalition
Catholic Charities
Center for Siouxland
City of Sioux City, Iowa
City of South Sioux City, Nebraska
Community Action Agency of Siouxland
Council on Sexual Assault and Domestic Violence (CSADV)
Crittenton Center
Dakota County
Dakota County Connections
Dakota County Health Department
Dakota Valley School District
Facilitated Resources
GiGis Playhouse – Sioux City
Girls Inc. of Sioux City
Goodwill Industries
Iowa Department of Human Services
Iowa Poison Control Center
Iowa Vocational Rehabilitation Service
Jackson Recovery Centers, Inc.
Lutheran Services in Iowa
Mary Treglia Community House
Mercy Medical Center
Morningside College
Norm Waitt Sr. YMCA
Northwest Area Education Agency

Northwest Area Education Agency
One Siouxland
Sanford Community Center
Siouxland Interstate Metropolitan Planning Co. (SIMPCO)
Sioux Basin Active Collaboration
Sioux City Community School District
Sioux City Human Rights Commission
Sioux City Mayor's Youth Commission
Sioux City Noon Lions Club
Sioux City Police Department
Siouxland CARES About Substance Abuse
Siouxland Chamber of Commerce
Siouxland Community Foundation
Siouxland Community Health Center (SCHC)
Siouxland Council on Child Abuse and Neglect (SCCAN)
Siouxland District Health Department/Healthy Siouxland Initiative
Siouxland Human Investment Partnership (SHIP)
Siouxland Mental Health Center
Siouxland Youth for Christ
Sky Ranch Behavioral Services
South Sioux City Community Schools
Stokes and Associates Psychological and Forensic Services
The Micah Project
The Salvation Army
Third Judicial District Department of Correctional Services
Third Judicial District Juvenile Court Services
Transitional Services of Iowa (TSI)
United Way of Siouxland
UnityPoint Health-St. Luke's
Waitt Institute for Violence Prevention
Western Iowa Tech Community College
Women Aware, Inc.
Woodbury County Board of Supervisors
Woodbury County Extension
Woodbury County Social Services