



Partnering with
**Growing
Community
Connections**
to
Empower Siouxland
Through
Comprehensive
Strategies

WHAT IS SOURCE FOR SIOUXLAND?



VISION

Our community will provide opportunities for youth and families to be healthy and resilient contributors to society.

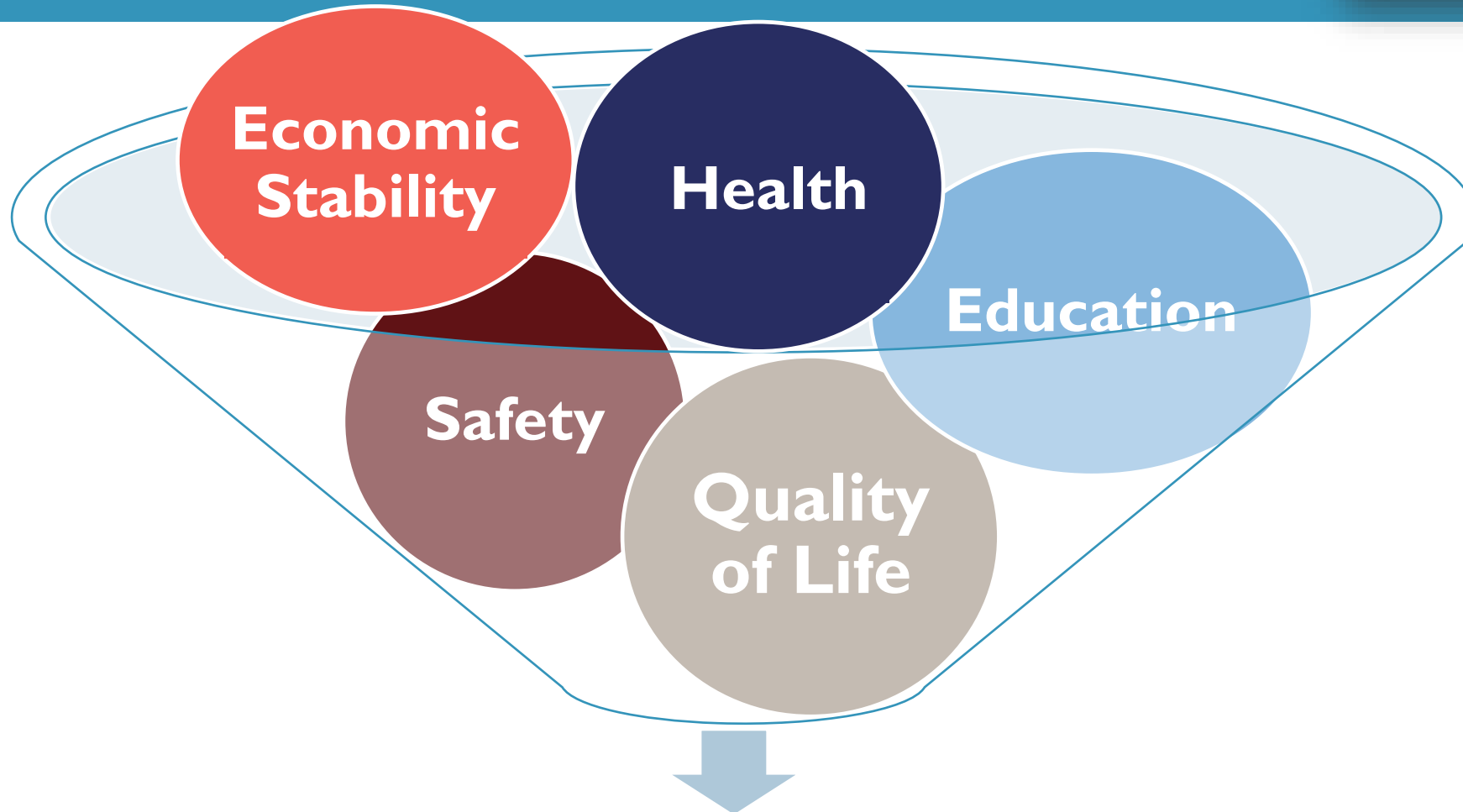
MISSION

A collaborative, strategic community planning initiative for a vibrant, safe, and healthy Siouxland.

DESIRED OUTCOMES

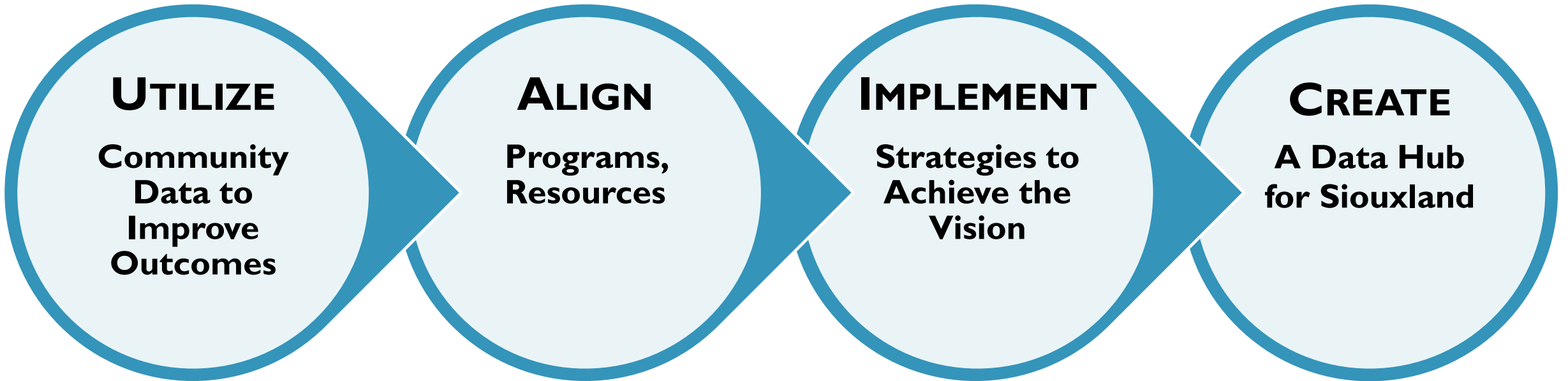
Promoting and measuring across the lifespan a vibrant, productive, educated, empowered, safe, and healthy Siouxland.

COMMUNITY DATA DRIVES STRATEGIES



Data-Driven Strategies to Strengthen Siouxland Families

STRATEGIC PLANNING GOALS



STRATEGIC PLANNING STRATEGIES



Siouxland CARES will continue to identify, collect, organize, and disseminate data that leads to a vibrant, productive, educated, empowered, safe, and healthy Siouxland.

UTILIZE
Community
Data to
Improve
Outcomes

STRATEGIC PLANNING STRATEGIES



ALIGN
Programs,
Resources

Source For Siouxland partners will inventory programs, plans, and resources related to the Vision and work with partners to align efforts, collaborate, and improve the community's return on investment.

STRATEGIC PLANNING STRATEGIES



**IMPLEMENT
Strategies
to Achieve
the Vision**

Source For Siouxland partners will implement actionable, outcome-centered strategies that collaboratively address the community vision and drive improved community data.

STRATEGIC PLANNING STRATEGIES



**CREATE
a Data Hub
for
Siouxland**

Partner with community investors and stakeholders to create a data hub for Siouxland that serves as a clearinghouse of community planning activities.

RETURN ON INVESTMENT



Communities that plan report:

Increased coordination of activities and resources

Less duplication of services and funding requests

Increased donor support, grant success, and in-kind resources

Increased

- economic development
- health
- quality of life
- safety
- overall satisfaction

2019 DATA REPORT



Empowering Our Community Through Comprehensive Strategies

2019 DATA REPORT

A collaborative strategic community planning initiative for a vibrant, safe, and healthy Siouxland.

SourceForSiouxland.com/Data

SFS & GCC PARTNERSHIP



Share community data

- SFS Annual Data Showcase at GCC October Meeting

Identify and publish resources

- SFS is leading efforts to combine dozens of community resource guides

Facilitate community planning initiatives

- GCC's Table Talk time will be used to identify and move data-driven initiatives forward



WHEN
Second Thursdays
9:00 a.m.

WHERE
Via Zoom
Contact JoAnn at
jgieselman@siouxlandship.org
for the link

NEXT STEPS & HOW YOU CAN ENGAGE



**Educate
Stake-
holders**

**Engage
Investors**

**Utilize
GCC
meetings**

**Communi-
cate**

NEXT STEPS FOR YOU



**SOU
MOU**

**Visit the
Website**

**Help Us
Connect**

Share

YOUR SOURCE TO LEARN MORE



WEBSITE

www.SourceForSiouxland.com

DATA

Siouxland CARES

SourceForSiouxland@gmail.com

(712) 255-3188

INVESTMENT & ADVANCEMENT

Erica DeLeon

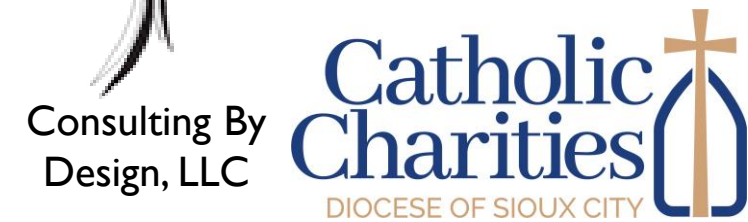
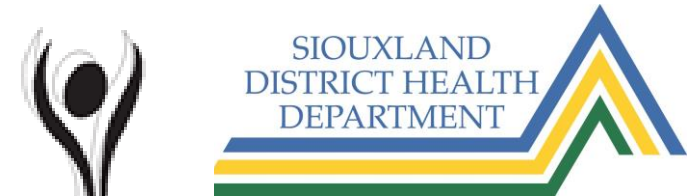
Erica@SourceForSiouxland.com

(712) 212-8791

LEADERSHIP TEAM



Barbara Aalfs
Terrie Binneboese
Amy Bloch
Britney Book
Deb Burnight
Erica DeLeon
JoAnn Gieselman
Kevin Grieme
Jeff Hackett
Heather Hennings
Heidi Kammer-Hodge
Michelle Lewis
Rachel Lundgren
Matt Ohman
Linda Phillips
Liz Rembold
Katie Roberts



Consulting By
Design, LLC



THANK YOU!



Empowering Our Community Through Comprehensive Strategies

Erica DeLeon

Erica@SourceForSiouxland.com