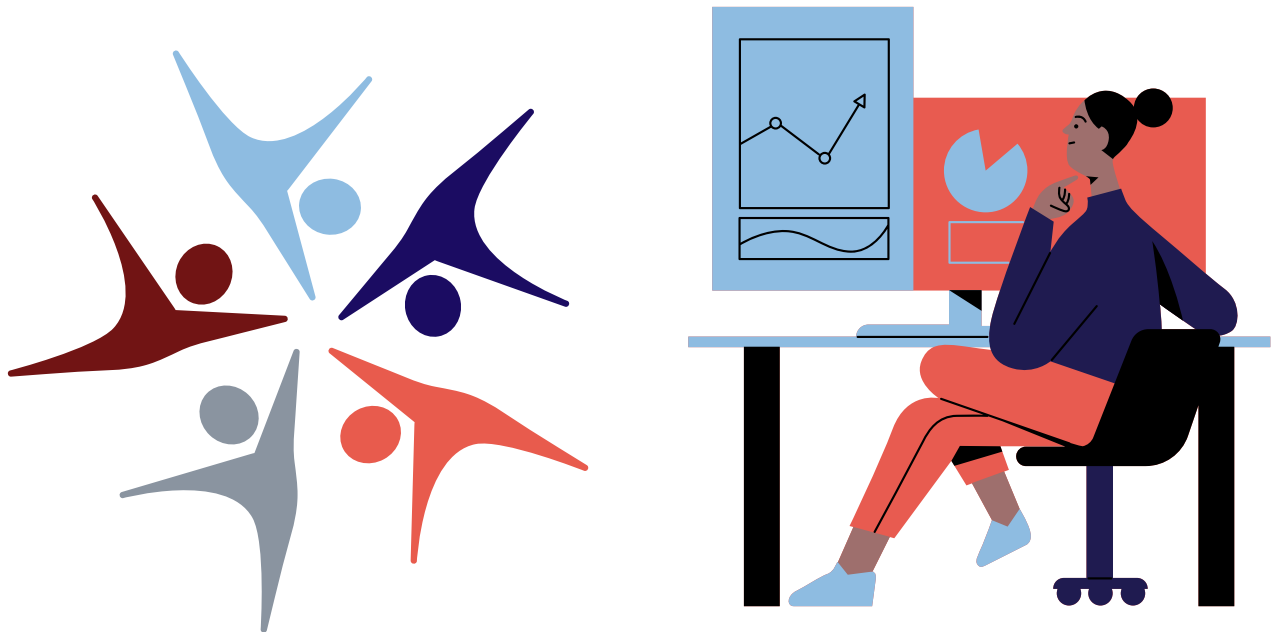




2022 Data Update



**EMPOWERING OUR
COMMUNITY THROUGH
COMPREHENSIVE
STRATEGIES**

SPECIAL THANKS

Major Data Funders

We would like to extend sincere thanks to the Helios Foundation and the United Way of Siouxland for providing sustained funding for the collection, analysis, and organization of the data! The collected information is propelling data-driven community planning in Siouxland.



Leadership Team Representatives

Barbara Aalfs, Source for Siouxland

Amy Bloch, Catholic Charities

Terrie Binneboese, United Way of Siouxland (Fiscal Agent)

Deb Burnight, Facilitated Resources

Erica DeLeon, One Siouxland (Contractor)

JoAnn Gieselman, Growing Community Connections

Kevin Grieme, Siouxland District Health

Heather Hennings, United Way of Siouxland (Fiscal Agent)

Heidi Kammer-Hodge, Consulting By Design

Michelle Lewis, Siouxland District Health

Rachel Lundgren, Siouxland CARES (Contractor)

Matt Ohman, Siouxland Human Investment Partnership

Linda Phillips, Source For Siouxland

Katie Roberts, Siouxland Community Foundation

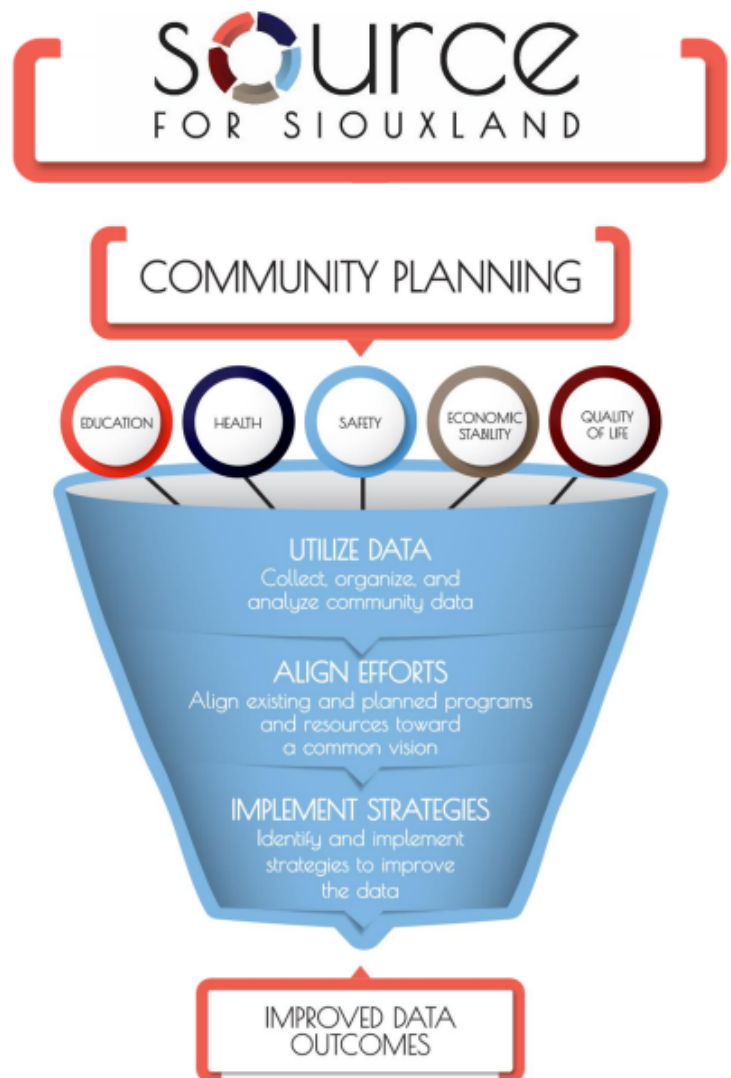


Empowering Our Community Through Comprehensive Strategies

2022 Siouxland Data Update

The following pages provide a look at data trends in Siouxland in the areas of Education, Health, Safety, Economic Stability, and Quality of Life. Historical reports and year-round updates are found at www.SourceForSiouxland.com.

Source For Siouxland contracts with Siouxland CARES to track and compile the enclosed data, update the online reports, answer your questions about the data, and lead the Source For Siouxland Data Committee. The Committee is always considering new indicators that more fully tell the story of progress and opportunities in Siouxland. Please reach out to SourceForSiouxland@gmail.com with any questions.





FOCUS AREAS

EDUCATION

Access to quality education is imperative for a strong Siouxland. Community members with higher levels of education often have healthier, more prosperous, and socially connected lives. Educational trends also correlate to future workforce needs and opportunities. Source For Siouxland monitors a variety of education indicators including: kindergarten readiness, student proficiency, graduation rates, and available school services.

HEALTH

Prevention of physical and behavioral health issues and access to care for those with current conditions greatly impacts our community. Source For Siouxland monitors health-related data to determine the best ways of improving health outcomes in Siouxland. Some important health indicators include mental health, access to care, substance abuse, obesity, and premature deaths.

SAFETY

Source For Siouxland measures a variety of safety indicators to ensure our community remains a safe place to live and reside. Key indicators of safety include reduction of violence, delinquency, quantity of drugs seized, and abuse.

ECONOMIC STABILITY

Ensuring a stable economy strengthens our communities and provides opportunities for growth. Source For Siouxland tracks economic indicators such as employment, median income, poverty, and access to public services, in order to keep the pulse on local economic needs.

QUALITY OF LIFE

Source For Siouxland keeps track of indicators of enhanced community well-being. Areas of focus include access to healthy foods, parks and recreation, commuting time, and exercise opportunities. Quality of life indicators will continue to expand as collaboration with local organizations leads to increased sharing of wellness-focused data.

ECONOMIC STABILITY

Vision

- Siouxland's workforce is fully employed in jobs that match their education and experience.
- Incomes allow families and individuals to be self-sufficient.

Objectives

- Increased Household Income
- Expanded Affordable Housing
- Reduction in Wage Gap
- Reduction in Unemployment

2022 Scorecard

Siouxland maintains a strong economic position with areas of opportunity.



Economic Stability					
Objective	2022 Indicators	2022 Report	Trend	Status	Previous Report
Increased Household Income	Median Household Income (2020)	Woodbury: 60,768	↗	Yellow	Woodbury: 59,224
		Dakota: 61,227	↗	Yellow	Dakota: 59,231
		Union: 74,006	↗	Green	Union: 70,378
Expanded Affordable Housing	Severe Housing Cost Burden (2016-2020)	Woodbury: 10%	→	Yellow	Woodbury: 10%
		Dakota: 9%	↗	Green	Dakota: 8%
		Union: 8%	↗	Green	Union: 7%
Reduction in Wage Gap	Income Inequality Ratio (2016-2020)	Woodbury: 4.3	↗	Yellow	Woodbury: 4.2
		Dakota: 3.5	↘	Green	Dakota: 3.8
		Union: 4.2	↗	Yellow	Union: 4.0
Reduction in Unemployment	Unemployment Rate March (2022)	Woodbury: 3.2%	↘	Yellow	Woodbury: 4.6%
		Dakota: 2.9%	↘	Yellow	Dakota: 3.5%
		Union: 2.5%	↘	Yellow	Union: 3.7%

Note: "Trend" looks at the change in comparison to local data for the past few years. "Status" refers to how the numbers compare to regional, state, or national data.

SOURCES: BLS, QF, CHR

ECONOMIC STABILITY								
	Source	Area	2017	2018	2019	2020	2021	2022
Unemployment								
Percent unemployment (March)- Not Adjusted	BLS	WC	3.5%	3.0%	3.1%	3.3%	4.9%	3.2%
Percent unemployment (March)- Not Adjusted	BLS	IA	3.5%	3.0%	3.1%	3.4%	4.8%	3.3%
Percent unemployment (March)- Not Adjusted	BLS	DC	5.1%	4.3%	4.6%	6.5%	3.7%	2.9%
Percent unemployment (March)- Not Adjusted	BLS	NE	3.0%	3.1%	3.3%	5.0%	3.0%	2.3%
Percent unemployment (March)- Not Adjusted	BLS	UC	3.4%	3.4%	3.0%	3.0%	4.0%	2.5%
Percent unemployment (March)- Not Adjusted	BLS	SD	3.3%	3.2%	3.3%	3.3%	3.6%	2.6%
Percent unemployment (March)- Not Adjusted	BLS	USA	4.5%	4.1%	3.8%	4.4%	6.2%	3.6%
<i>Note: BLS data was subject to revision in 2022. These changes account for the adjustments in previous years seen above.</i>								
	Source	Area	2016	2017	2018	2019	2020	2021
Average Unemployment								
Unemployment Rate, Annual (Not Seasonally Adjusted)	BLS	WC	3.5%	3.1%	2.5%	2.6%	5.2%	4.3%
Unemployment Rate, Annual (Not Seasonally Adjusted)	BLS	IA	3.6%	3.1%	2.5%	2.6%	5.1%	4.2%
Unemployment Rate, Annual (Not Seasonally Adjusted)	BLS	DC	4.2%	4.1%	3.6%	3.9%	4.7%	3.0%
Unemployment Rate, Annual (Not Seasonally Adjusted)	BLS	NE	3.1%	3.0%	2.9%	3.0%	4.1%	2.5%
Unemployment Rate, Annual (Not Seasonally Adjusted)	BLS	UC	3.2%	3.4%	2.9%	2.9%	4.7%	3.6%
Unemployment Rate, Annual (Not Seasonally Adjusted)	BLS	SD	3.0%	3.1%	2.8%	2.8%	4.3%	3.1%
<i>Note: BLS data was subject to revision in 2022. These changes account for the adjustments in previous years seen above.</i>								
	Source	Area	2016	2017	2018	2019	2020	2021
Poverty								
All ages in poverty	QF	WC	14.0%	13.3%	13.4%	13.4%	13.8%	11.3%
All ages in poverty	QF	IA	12.2%	11.7%	10.8%	10.7%	11.2%	10.2%
All ages in poverty	QF	DC	14.6%	11.4%	12.8%	12.7%	12.4%	9.9%
All ages in poverty	QF	NE	12.2%	12.7%	10.7%	10.8%	11.0%	9.2%
All ages in poverty	QF	UC					5.9%	5.9%
All ages in poverty	QF	SD					13.1%	11.6%
All ages in poverty	QF	USA	14.7%	14.0%	13.4%	12.3%	11.8%	11.4%
	Source	Area	2015	2016	2017	2018	2019	2020
Children in Poverty								
Under age 18 in poverty	SAIPE	WC	19.6%	18.5%	16.1%	19.8%	16.1%	12.8%
Under age 18 in poverty	SAIPE	IA	14.9%	14.6%	12.6%	13.5%	12.8%	12.0%
Under age 18 in poverty	SAIPE	DC	20.7%	17.7%	18.9%	18.0%	14.0%	13.1%
Under age 18 in poverty	SAIPE	NE	15.9%	13.9%	13.7%	12.9%	11.5%	10.1%
Under age 18 in poverty	SAIPE	UC				6.2%	5.8%	5.1%
Under age 18 in poverty	SAIPE	SD				16.1%	14.9%	13.9%
Under age 18 in poverty	SAIPE	USA	20.7%	19.5%	18.4%	18.0%	16.8%	15.7%
	Source	Area	2015	2016	2017	2018	2019	2020
Access to Jobs								
Total Employment (% Change)	QF	WC				0.3%	5.6%	-0.6%
Total Employment (% Change)	QF	DC				1.3%	0.1%	-0.2%
Total Employment (% Change)	QF	UC				-1.5%	-6.6%	-2.9%
Total Employment (% Change)	QF	USA				2.1%	1.8%	0.9%
<i>Note: The 2020 release numbers refer to the 2019-2020 percent change.</i>								
	Source	Area	2017	2018	2019	2020	2021	2022
Housing								
Home Ownership	CHR	WC			67%	66%	66%	67%
Home Ownership	CHR	DC			66%	66%	65%	66%
Home Ownership	CHR	UC			73%	71%	69%	68%
Severe Housing Cost Burden (Over 50% of Income)	CHR	WC			10%	9%	10%	10%
Severe Housing Cost Burden (Over 50% of Income)	CHR	DC			9%	9%	8%	9%
Severe Housing Cost Burden (Over 50% of Income)	CHR	UC			7%	6%	7%	8%
	Source	Area	2016	2017	2018	2019	2020	2021
Housing Units Constructed	SCHA	SC	241	274	79	363	521	122
Housing Choice Voucher Applications	SCHA	SC		1,526	4,037	3,996	3,076	3,058
	Source	Area	2016-17	2017-18	2018-19	2019-20	2020-21	2021-22
Food Access								
% Students Eligible for Free/Reduced Meals	IKC/IDE	SC	63.1%	58.2%	61.1%	59.0%	70.1%	65.6%
% Students Eligible for Free/Reduced Meals	IKC/KCDC	WC	59.5%	55.8%	52.0%	54.9%	61.5%	58.0%
% Students Eligible For Free/Reduced Meals	IKC/IDE	IA	41.8%	41.3%	40.5%	43.0%	41.8%	40.7%
% Students Eligible for Free/Reduced Meals	NDE	SSC	66.2%	63.5%	68.3%	70.0%	68.8%	52.8%

% Students Eligible for Free/Reduced Meals	NKC/NDE	DC	56.5%	60.3%	66.6%	67.7%	66.9%	51.0%
% Students Eligible For Free/Reduced Meals	NDE	NE	44.7%	45.83%	45.2%	45.6%	46.3%	NYA
% Students Eligible For Free/Reduced Meals	KCSD	DV	16.8%	16.0%	15.3%	13.9%	NYA	NYA
% Students Eligible For Free/Reduced Meals	KCSD	UC	24.0%	21.9%	22.4%	22.6%	NYA	NYA
% Students Applications For Free/Reduced Meals	DV	DV					11.7%	3.0%
% Students Eligible For Free/Reduced Meals	KCSD	SD	37.7%	39.1%	38.2%	35.5%	NYA	NYA
<i>Note: Dakota Valley free/reduced enrollment drastically reduced due to free lunches being provided, causing few applications.</i>								
	Source	Area	2017	2018	2019	2020	2021	2022
Food Bank Distribution in Pounds (April)	FBS	FBR				357,260	298,197	269,508
	Source	Area	2016	2017	2018	2019	2020	2021
Child Assistance								
% Children Receiving WIC Services	IKC	WC	37.8%	41.5%	39.3%	37.8%	NYA	NYA
% Children Receiving WIC Services	IKC	IA	26.5%	26.90%	25.9%	23.9%	NYA	NYA
Families w/ Aid-Dependent Child Assistance	NKC	DC	101	81	NYA	NYA	NYA	NYA
Families w/ Aid-Dependent Child Assistance	NKC	NE	5,710	5904	NYA	NYA	NYA	NYA
Families Receiving TANF	SDKC	UC	10	12	8	<6	6	7
Families Receiving TANF	SDKC	SD	3,005	3,035	3,001	2,915	2,846	2,626
<i>Note: TANF refers to the "Temporary Assistance for Needy Families"</i>								
	Source	Area	2016	2017	2018	2019	2020	2021
Child Care								
Families w/all parents working & children under 6	CCR&R	WC					78%	78%
Av. Weekly Cost- DHS Licensed Centers for Infant	CCR&R	WC					\$189.00	\$198.00
Av. Weekly Cost- Registered In-Home for Infant	CCR&R	WC					\$136.67	\$137.86
Av. Weekly Cost- DHS Licensed Centers for 3 y.o.'s	CCR&R	WC					\$158.60	\$150.67
Av. Weekly Cost- Registered In-Home for 3 y.o's	CCR&R	WC					\$129.06	\$132.41
Av. Weekly Cost- DHS Licensed Centers before/after school	CCR&R	WC					\$66.36	\$57.87
Av. Weekly Cost- Registered In-Home before/after school	CCR&R	WC					\$57.46	\$58.38
	Source	Area	2015	2016	2017	2018	2019	2020
Earnings								
Median Household Income	QF	WC	46,720	49,010	49,010	51,350	59,224	60,768
Median Household Income	QF	IA	54,843	54,570	54,570	56,570	60,523	61,836
Median Household Income	QF	DC	49,093	52,336	52,336	52,401	59,231	61,227
Median Household Income	QF	NE	55,073	54,384	54,384	56,675	61,439	63,015
Median Household Income	QF	UC					70,378	74,006
Median Household Income	QF	SD					58,275	59,896
Median Household Income	QF	USA	55,775	55,322	55,322	57,652	62,843	64,994
	Source	Area	2017	2018	2019	2020	2021	2022
Wage Gap								
Income Inequality	CHR	WC	4.2	4.1	4.2	4.2	4.2	4.3
Income Inequality	CHR	DC	4.5	4.2	4.1	4.0	3.8	3.5
Income Inequality	CHR	UC	3.9	3.8	3.9	3.9	4.0	4.2
<i>Note: Income Inequality refers to the ratio of household income at the 80th percentile to income at the 20th percentile.</i>								

	Source	Area	2017	2018	2019	2020	2021	2022
Cost of Living (July)								
CPI Overall Average	BLS	MWR		235.3	238.8	240.4	254.7	276.5
CPI Overall Percent Change (Since Previous Year)	BLS	MWR						8.6%
<i>Note: CPI stands for Consumer Price Index.</i>								
	Source	Area	2017	2018	2019	2020	2021	2022
Homelessness (PIT Numbers- January)								
Unsheltered People	ICA/CFS	SC	2	6	7	17	16	16
Sheltered People (Total)	ICA/CFS	SC	286	258	248	284	198	196
People in Emergency Shelter	ICA/CFS	SC	171	189	170	220	175	171
People in Transitional Housing	ICA/CFS	SC	115	69	78	64	23	25
Chronically Homeless People	ICA/CFS	SC	17	37	21	34	41	43
Point in Time (PIT) Total	ICA/CFS	SC	288	264	255	301	214	212
<i>Note: In 2021, the Emergency Shelter count does not include the number of people who stayed at the Gospel Mission Women's and Children's Shelter on the night of January 27, 2021.</i>								
	Source	Area	2016/17	2017/18	2018/19	2019/20	2020/21	2021/22
Homeless Youth								
Identified Homeless Students	SCCSD	SC	418	388	361	276	196	221

EDUCATION

Vision

- Educational partners work closely with the business community to ensure tomorrow's workforce is prepared for tomorrow's economy.
- Barriers to children learning are removed.

Objectives

- Greater Educational Attainment
- Increased Literacy
- Improved School Readiness
- Increased Educational Attainment for People of Color

2022 Scorecard

Siouxland shows areas of strength and opportunity among the education indicators.



Education					
Objective	2022 Indicators	2022 Report	Trend	Status	Previous Report
Greater General Educational Attainment	High School Graduation Rates (2019-2020)	Woodbury: 86.3%	↗	Yellow	Woodbury: 84.5%
		Dakota: 88.0%	↗	Yellow	Dakota: 85.7%
		Union: 95%	↗	Green	Union: 90%
Increased Literacy	Combined Reading Proficiency (2019-20) Combined LA NCAS (2020-21) Combined LA Proficiency (2018-2019)	Sioux City: 59%			Sioux City: 61.7%
		South Sioux City: 37%			South Sioux City: 38%
		Dakota Valley: N/A			Dakota Valley: 61%
Improved School Readiness	FAST Benchmarks (2021-2022)	Sioux City: 14%	↗	Yellow	Sioux City: 8.9%
Increased Educational Attainment for People of Color	People of Color (25+) with College Degree (2017)	Siouxland: 22%	→	Red	Siouxland: 21%

Note: "Trend" looks at the change in comparison to local data for the past few years.
"Status" refers to how the numbers compare to regional, state, or national data.

SOURCES: IDE, NDE, SDDE, NC-EMSI

EDUCATION							
	Source	Area	2017-18	2018-19	2019-20	2020-21	2021-22
School Services							
English Language Learners							
% of English Language Learners	IDE	SCCS	17.3%	18.4%	19.5%	20.0%	21.0%
% of English Language Learners	IDE	IA	6.1%	6.5%	6.5%	6.3%	6.6%
% of English Language Learners	NDE/SSCCS	SSCCS	13.98%	18.21%	19.49%	19.85%	NYA
% of English Language Learners	NDE	NE	6.04%	7.16%	7.43%	7.25%	NYA
Special Education and Services							
% of Students Receiving Special Education Services	IDE	SCCS		14.2%	13.9%	14.1%	13.1%
% of Students Receiving Special Education Services	IDE	IA		12.7%	12.9%	12.9%	12.7%
% of Students Receiving Special Education Services	NDE/SSCCS	SSCCS	14.22%	12.57%	12.13%	11.53%	NYA
% of Students Receiving Special Education Services	NDE	NE	15.74%	15.48%	15.56%	15.67%	NYA
% of Students with Special Needs	KCSD	DV	10.10%	9.80%	11.10%	10.60%	11.7%
% of Students with Special Needs	KCSD	SD	15.40%	15.60%	15.80%	15.60%	15.80%
	Source	Area	2016-17	2017-18	2018-19	2019-20	2020-21
School Mobility							
School Mobility Rate	NDE/SSCCS	SSCCS	15.41%	16.58%	13.75%	8.68%	9.39%
School Mobility Rate	NDE	NE	12.54%	12.10%	10.32%	8.36%	9.12%
	Source	Area	2016-17	2017-18	2018-19	2019-20	2020-21
Graduation Rates							
Graduation Rate	IDE	SC	83.9%	85.5%	84.5%	84.5%	86.3%
Graduation Rate	NDE	SSC	89.9%	90.0%	92.2%	85.7%	88.0%
Graduation Rate	KCSD/SDDE	DV	92.0%	94.0%	91.0%	90.0%	95.0%
Dropout Rates							
Dropout Rate	IDE	SC	2.5%	2.2%	1.9%	2.2%	1.7%
Dropout Rate	NDE	SSC	1.0%	1.1%	1.1%	0.6%	1.4%
Dropout Rate	KCSD	DV	1.2%	0.3%	0.7%	0.9%	0.9%
	Source	Area	2013	2014	2015	2016	2017
Educational Attainment							
Population 25+ with High School Diploma	NC-EMSI	WC,DC,UC				84%	84%
Population 25+ with Associates Degree	NC-EMSI	WC,DC,UC				8%	9%
Population 25+ with Bachelor's Degree or higher	NC-EMSI	WC,DC,UC				21%	22%
Educational Attainment (Population 25+) by Race/Ethnicity							
Population with Less than High School (White, Non-Hispanic)	NC-EMSI	WC,DC,UC				8%	8%
Population with High School Diploma Only (White, Non-Hispanic)	NC-EMSI	WC,DC,UC				58%	57%
Population with College Degree (White, Non-Hispanic)	NC-EMSI	WC,DC,UC				34%	35%
Population with Less than High School (All Races-Hispanic)	NC-EMSI	WC,DC,UC				55%	53%
Population with High School Diploma Only (All Races-Hispanic)	NC-EMSI	WC,DC,UC				36%	38%
Population with College Degree (White, All Races-Hispanic)	NC-EMSI	WC,DC,UC				9%	9%
Population with Less than High School (POC- All Ethnicities)	NC-EMSI	WC,DC,UC				29%	30%
Population with High School Diploma Only (POC- All Ethnicities)	NC-EMSI	WC,DC,UC				50%	47%
Population with College Degree (POC- All Ethnicities)	NC-EMSI	WC,DC,UC				21%	22%
	Source	Area	2000	2017	2018	2019	2020
Preschool & Kindergarten Readiness							
% 3-4 year old children in preschool	IKC	WC	45.3%	44.7%	39.1%	36.5%	37.5%
% 3-4 year old children in preschool	IKC	IA	41.0%	47.5%	46.9%	46.5%	45.5%
	Source	Area	2010	2014	2017	2018	2019
% 3-4 year old children in preschool	NKC	DC	19.5%	26.5%	32.4%	34.7%	NYA
% 3-4 year old children in preschool	NKC	NE	44.7%	45.8%	42.3%	43.3%	NYA
	Source	Area	2017	2018	2019	2020	2021
Number of Registered Early Learning Environments	CCR&R	WC				184	196
Capacity of Registered Early Learning Environments	CCR&R	WC				7309	7548
Vacancies at Registered Early Learning Environments	CCR&R	WC				296	
<i>Note: Data is from June in 2020 and July in 2021.</i>							
	Source	Area	2018	2019	2020	2021	2022
Licensed group family child care homes	KCSD	UC	3	2	4	4	2
Registered family child care homes	KCSD	UC	6	5	5	4	3
Licensed child care centers	KCSD	UC	6	6	5	5	6
	Source	Area	2015-16	2018-19	2019-20	2020-21	2021-22
Preschool Students Meeting IGDI Benchmarks Literacy (Fall)	SCCSD	IA	27.06%				
Preschool Students Meeting IGDI Benchmarks Literacy (Fall)	SCCSD	NWAEA	18.54%				
Preschool Students Meeting IGDI Benchmarks Literacy (Fall)	SCCSD	SCCSD	16.58%	8.0%	8.9%	18.0%	14.0%
<i>Note: IGDI denotes "Individual Growth and Development Indicators for PreK"; changes in testing occurred in 2018-2019.</i>							
Kindergarten Students Meeting FAST Benchmarks (Fall)	SCCSD	IA	64.95%				
Kindergarten Students Meeting FAST Benchmarks (Fall)	SCCSD	NWAEA	57.17%				
Kindergarten Students Meeting FAST Benchmarks (Fall)	SCCSD	SCCSD	45.55%	53.34%	37.49%	37.00%	36.00%
<i>Note: FAST denotes "Formative Assessment System for Teachers K-6"; changes in testing occurred in 2018-2019.</i>							

	Source	Area	2013-14	2014-15	2015-16	2016-17	2017-18
Subject Proficiency							
Grades 3-5 AYP % Proficient							
Math	IDE	SCCSD		73.9%	71.4%	70.5%	69.3%
Reading	IDE	SCCSD		70.0%	67.9%	69.0%	68.6%
Grades 6-8 AYP % Proficient							
Math	IDE	SCCSD		75.4%	74.7%	74.0%	69.6%
Reading	IDE	SCCSD		72.7%	72.0%	71.9%	68.5%
Grade 11 AYP % Proficient							
Math	IDE	SCCSD		78.1%	73.3%	72.3%	73.4%
Reading	IDE	SCCSD		78.0%	75.8%	73.2%	76.3%
	Source	Area	2015-16	2016-17	2017-18	2018-19	2019-20
Subject Proficiency							
Math Proficiency (District Combined Total)	SCCSD	SCCSD (IA)				62.72%	55.99%
Reading Proficiency (District Combined Total)	SCCSD	SCCSD (IA)				61.71%	58.91%
<i>Note: 2018- is a baseline for proficiency measurement for SCCSD. The assessment was not administered in 2020-21 due to COVID-19</i>							
	Source	Area	2016-17	2017-18	2018-19	2019-20	2020-21
Subject Proficiency- NSCAS Proficiency							
Math (District Combined Total)	SSCCS	SSCCS (NE)					43%
Language Arts (District Combined Total)	SSCCS	SSCCS (NE)					37%
<i>Note: 2020-21- is a baseline for proficiency measurement for South Sioux City Community Schools.</i>							
	Source	Area	2015-16	2016-17	2017-18	2018-19	2019-20
Grade 3 NSCAS % Proficient							
Math	NED	SSCCS			35%	54%	NA
Language Arts	NED	SSCCS		41%	41%	52%	NA
Grade 5 NSCAS % Proficient							
Science	NED	SSCCS	65%	66%	64%	64%	NA
Grade 6 NSCAS % Proficient							
Math	NED	SSCCS			53%	66%	NA
Language Arts	NED	SSCCS		35%	39%	44%	NA
Grade 8 NSCAS % Proficient							
Math	NED	SSCCS			59%	52%	NA
Language Arts	NED	SSCCS		41%	41%	38%	NA
Science	NED	SSCCS	53%	48%	50%	49%	NA
<i>Due to the COVID-19 pandemic, the NDE cancelled the 2019 - 2020 NSCAS assessment.</i>							
	Source	Area	2015-16	2016-17	2017-18	2018-19	2019-20
Grades 3,8,11 SD State Assessment Proficient							
Math	SDDE	DV				54%	NA
Language Arts	SDDE	DV				61%	NA
Grades 5,8,11 SD State Assessment Proficient							
Science	SDDE	DV				57%	NA
<i>Due to the COVID-19 pandemic, state assessments were cancelled in 2020.</i>							
	Source	Area	2016-17	2017-18	2018-19	2019-20	2020-21
Incidents and Consequences							
All Removals (Suspensions, Expulsions)	IDE	SCCSD	1915	1938	1915	1289	1470
Founded Bullying Incidents	IDE	SCCSD	30	35	14	14	13
Total Number of In-School Suspensions	SSCCS	SSCCS				247	129
Total Number of Out-of-School Suspensions	SSCCS	SSCCS				79	118
Founded Bullying Incidents	SSCCS	SSCCS				6	4
Suspensions	SDDE	DV			64	NYA	NYA

HEALTH

Vision

- All community members have access to healthcare and understand how to impact their personal well-being.

Objectives

- Increased Physical Wellbeing
- Decreased Substance Use in the Maternal Health Population
- Decreased Local STI Prevalance
- Improved Mental Health Landscape

2022 Scorecard

Siouxland has multiple opportunity areas in health.



Health					
Objective	2022 Indicators	2022 Report	Trend	Status	Previous Report
Increased physical wellbeing	Percentage of Adults (20+) who are Obese (2019)	Woodbury: 40%	↗	Red	Woodbury: 35%
		Dakota: 43%	↗	Red	Dakota: 38%
		Union: 32%	↘	Yellow	Union: 34%
Decreased substance use in the maternal health population	Drug Exposed Infants (2021)	Siouxland: 75	↗	Red	Siouxland: 73
Decreased local STI prevalence	Gonorrhea Rate (2020)	Woodbury: 411.2	↗	Red	Woodbury: 403.5
		Dakota: 189.8	↘	Green	Dakota: 209.7
		Union: 56.5	↗	Green	Union: 49.0
Improved mental health landscape	Poor Mental Health Days (2019)	Woodbury: 4	↗	Yellow	Woodbury: 3.7
		Dakota: 3.8	↗	Yellow	Dakota: 3.5
		Union: 3.4	↗	Green	Union: 2.8

Note: "Trend" looks at the change in comparison to local data for the past few years. "Status" refers to how the numbers compare to regional, state, or national data.

SOURCES: CHR, SL, ATLAS

HEALTH							
	Source	Area	2015	2016	2017	2018	2019
Access to Alcohol and Other Drugs							
Youth Say Difficult to Access Alcohol	SCYS	Tri	*	45%	*	54%	65%
Youth Say Difficult to Access Tobacco	SCYS	Tri	*	57%	*	62%	72%
Youth Say Difficult to Access Marijuana	SCYS	Tri	*	66%	*	67%	76%
Youth Say Difficult to Access Meth	SCYS	Tri	*	89%	*	88%	90%
Youth Say Difficult to Access Vape Products	SCYS	Tri					65%
	Source	Area	2015	2016	2017	2018	2019
Youth Prevalence of Alcohol and Other Drugs							
30-Day Prevalence-Alcohol							
Used Alcohol-12th	SCYS	Tri	*	26%	*	22%	
Used Alcohol-11th	SCYS	Tri					14%
Binge Drinking-12th (>5 drinks)	SCYS	Tri	*	15%	*	12%	
Binge Drinking-11th (>5 drinks)	SCYS	Tri					7%
30-Day Prevalence-Used Cigarettes-12th	SCYS	Tri	*	9%	*	8%	
30-Day Prevalence-Used Cigarettes-11th	SCYS	Tri					3%
30-Day Prevalence-Used Marijuana-12th	SCYS	Tri	*	12%	*	15%	
30-Day Prevalence- Used Marijuana- 11th	SCYS	Tri					10%
Never Used in Past 30-Days							
Never Used Vaping-12th	SCYS	Tri				78%	
Never Used Vaping-11th	SCYS	Tri					89%
12th Graders in Past Year, Ridden w/-Driver Using AOD	SCYS	Tri	*	20%	*	22%	
11th Graders in Past Year, Ridden w/-Driver Using AOD	SCYS	Tri					16%
10th Graders in Past Year, Ridden w/-Driver Using AOD	SCYS	Tri	*	21%	*	20%	
Youth who believe their parents think it is...							
Wrong/Very Wrong for Youth to Drink Alcohol	SCYS	Tri	*	82%	*	80%	85%
Wrong/Very Wrong for Youth to Drink Alcohol Regularly	SCYS	Tri	*	89%	*	89%	91%
Wrong/Very Wrong for Youth to Smoke Cigarettes	SCYS	Tri	*	94%	*	94%	94%
Wrong/Very Wrong for Youth to Vape	SCYS	Tri					92%
Wrong/Very Wrong for Youth to Smoke Marijuana	SCYS	Tri	*	93%	*	94%	93%
Youth Been Around Other Teens Using in the Past Year...							
Alcohol-10th Graders	SCYS	Tri	*	35%	*	30%	
Alcohol-11th Graders	SCYS	Tri					27%
Alcohol-8th Graders	SCYS	Tri	*	21%	*	30%	25%
Marijuana-10th Graders	SCYS	Tri	*	39%	*	32%	
Marijuana-11th Graders	SCYS	Tri					31%
Marijuana-8th Graders	SCYS	Tri	*	23%	*	30%	25%
Methamphetamine-10th Graders	SCYS	Tri	*	5%	*	6%	
Methamphetamine-11th Graders	SCYS	Tri					5%
Methamphetamine-8th Graders	SCYS	Tri	*	3%	*	5%	6%
<i>Note: Siouxsland CARES Youth Survey was conducted every other year, beginning in 2012. Starting in 2019, it moved to the Fall instead of Spring. Additionally, in 2019 the surveyed youth were 6th, 8th, and 11th graders. Previously, the surveyed youth were 6th, 8th, 10th, and 12th graders.</i>							
	Source	Area		2012	2014	2016	2018
Substance Use Disorders in Homes							
6th, 8th, & 11th graders	IYS	WC		18%	15%	17%	19%
6th, 8th, & 11th graders	IYS	IA		13%	13%	14%	15%
	Source	Area	2017	2018	2019	2020	2021
Compliance Checks							
Compliance Rate - Tobacco	IABD/FDA	IA	91%	93%	93%	96%	88%
Compliance Rate - Tobacco	FDA	NE			88%	91%	91%
Compliance Rate - Tobacco	FDA	SD			76%	85%	80%
Compliance Rate - Tobacco	SCPD	SC	89%	93%	91%	83%	88%
Compliance Checks- Tobacco	SCPD	SC	64	122	152	77	102
Compliance Rate - Alcohol	SCPD	SC	89%	89%	0%	90%	81%
Compliance Checks - Alcohol	SCPD	SC	149	123	1	83	167
# Compliance Checks - Alcohol	CARES	SSC	30	30	30	N/A	10
Compliance Rate - Alcohol	CARES	SSC	97%	97%	80%	N/A	70%
# Compliance Checks - Tobacco/Vape	CARES	SSC					10
Compliance Rate - Tobacco/Vape	CARES	SSC					80%

	Source	Area	2017	2018	2019	2020	2021
Newborn Drug Tests							
Number Tested	SL/MO	Tri	472	452	491	481	473
Newborns tested positive for drugs	SL/MO	Tri	80	65	83	73	75
% positive tests (pos tests/number tested)	SL/MO	Tri	16.9%	14.3%	16.9%	15.2%	15.9%
<i>Notes: Positive test breakdown by type of substance is available upon request.</i>							
	Source	Area	2018	2019	2020	2021	2022
Life Expectancy							
Premature Death	CHR	WC	6,700	7,000	7,000	7,200	8,300
Premature Death	CHR	IA	5,900	6,200	6,200	6,200	6,500
Premature Death	CHR	DC	5,900	6,200	5,600	5,600	6,400
Premature Death	CHR	NE	6,000	6,100	6,100	6,100	6,400
Premature Death	CHR	UC		4,600	5,200	5,200	5,700
Premature Death	CHR	SD		7,300	7,200	7,300	7,600
COVID-19 Age-Adjusted Mortality	CHR	WC					150
COVID-19 Age-Adjusted Mortality	CHR	IA					99
COVID-19 Age-Adjusted Mortality	CHR	DC					316
COVID-19 Age-Adjusted Mortality	CHR	NE					84
COVID-19 Age-Adjusted Mortality	CHR	UC					114
COVID-19 Age-Adjusted Mortality	CHR	SD					127
	Source	Area	2018	2019	2020	2021	2022
Uninsured							
Uninsured	CHR	WC	8%	7%	8%	8%	8%
Uninsured	CHR	IA	6%	5%	5%	6%	6%
Uninsured	CHR	DC	16%	16%	16%	15%	15%
Uninsured	CHR	NE	9%	10%	10%	9%	10%
Uninsured	CHR	UC		6%	8%	7%	8%
Uninsured	CHR	SD		10%	11%	11%	12%
	Source	Area	2018	2019	2020	2021	2022
Obesity							
Obese Adults	CHR	WC	35%	35%	35%	35%	40%
Obese Adults	CHR	IA	32%	32%	33%	34%	34%
Obese Adults	CHR	DC	36%	38%	39%	38%	43%
Obese Adults	CHR	NE	31%	31%	32%	33%	34%
Obese Adults	CHR	UC		32%	30%	34%	32%
Obese Adults	CHR	SD		31%	32%	32%	33%
Adult Smoking							
Percentage of Current Smokers	CHR	WC	17%	17%	17%	21%	18%
Percentage of Current Smokers	CHR	DC	19%	19%	19%	17%	16%
Percentage of Current Smokers	CHR	UC	14%	14%	13%	17%	16%
	Source	Area	2015	2016	2017	2018	2020
Suicide/ 100,000 Population							
Age-Adjusted Suicide Death Rate	CDC-W	WC			12.3	N/A	N/A
Age-Adjusted Suicide Death Rate	CDC-W	IA			14.8	16.7	18
Age-Adjusted Suicide Death Rate	CDC-W	DC			N/A	N/A	N/A
Age-Adjusted Suicide Death Rate	CDC-W	NE			12.9	16	14.9
Age-Adjusted Suicide Death Rate	CDC-W	UC			N/A	N/A	N/A
Age-Adjusted Suicide Death Rate	CDC-W	SD			19.7	20.6	21
Age-Adjusted Suicide Death Rate	CDC-W	USA			13.3	14.5	13.5
<i>Note: Dakota & Union County suicide data is suppressed due to low count. The Woodbury County data for 2020 was marked unreliable.</i>							
	Source	Area	2016	2017	2018	2019	2020
Total Suicides							
Suicide Deaths	IPHTP	WC	10	15	18	14	31
	Source	Area	2017	2018	2019	2020	2021
Adverse Childhood Experiences							
Percentage of Children with 2+ ACES	AHR	IA				16.7%	16.1%
Ranking (Compared with All US States)	AHR	IA				30th	29th
Percentage of Children with 2+ ACES	AHR	NE				15.3%	13.4%
Ranking (Compared with All US States)	AHR	NE				20th	10th
Percentage of Children with 2+ ACES	AHR	SD				18.2%	17.9%
Ranking (Compared with All US States)	AHR	SD				40th	40th
Percentage of Children with 2+ ACES	AHR	USA				14.7%	14.8%

	Source	Area	2017	2018	2019	2020	2021
Cancer							
Age-Adjusted All Cancer Incidence Rate per 100,000 pop	NIH	WC				498.9	504
Age-Adjusted All Cancer Incidence Rate per 100,000 pop	NIH	DC				452.9	409
Age-Adjusted All Cancer Incidence Rate per 100,000 pop	NIH	UC				507.1	527.4
Age-Adjusted All Cancer Incidence Rate per 100,000 pop	NIH	USA				448.7	448.6
<i>Note: 2021 report uses 2018 data.</i>							
	Source	Area	2017	2018	2019	2020	2021
Cancer							
Recent 5-Year Trend in Incidence	NIH	WC				-0.1	0
Recent 5-Year Trend in Incidence	NIH	DC				0.8	0.4
Recent 5-Year Trend in Incidence	NIH	UC				-3.7	-2.3
Recent 5-Year Trend in Incidence	NIH	USA				-1	-0.9
<i>Note: 2021 report uses 2014-2018 data.</i>							
	Source	Area	2016	2017	2018	2019	2020
STI Prevalence/100,000 Population							
HIV	ATLAS	WC	107.1	122.1	125	140.6	151.2
HIV	ATLAS	IA	97.4	101.8	105.8	109.6	111.1
HIV	ATLAS	DC	43.9	44.5	38.1	44.6	50.9
HIV	ATLAS	NE	131.2	134.5	136.8	140.6	145.7
HIV	ATLAS	UC	N/A	N/A	N/A	N/A	N/A
HIV	ATLAS	SD	76.3	80.6	85.1	89.8	94.4
HIV	ATLAS	USA	372.2	366.3	372.2	378	379.9
Gonorrhea	ATLAS	WC	127.6	168.4	334.6	403.5	411.2
Gonorrhea	ATLAS	IA	83	119.6	153.7	168.3	262.5
Gonorrhea	ATLAS	DC	133.1	134.9	205	209.7	189.8
Gonorrhea	ATLAS	NE	113.1	138.5	140	153.4	215.7
Gonorrhea	ATLAS	UC	40.5	56.2	48.8	49	56.5
Gonorrhea	ATLAS	SD	147	147.8	192.2	245.3	332.9
Gonorrhea	ATLAS	USA	145.1	171	178.6	187.8	245
Chlamydia	ATLAS	WC	606.7	513.1	680.9	785.6	812.7
Chlamydia	ATLAS	IA	414.6	442.2	466.3	508.5	572.9
Chlamydia	ATLAS	DC	567.1	539.7	504.9	554.3	439.4
Chlamydia	ATLAS	NE	430.1	448.6	416.8	480.3	555.1
Chlamydia	ATLAS	UC	145.3	242.2	218.4	226	269.9
Chlamydia	ATLAS	SD	501.9	508.3	504.4	514	556.1
Chlamydia	ATLAS	USA	494.4	525.7	538.3	551	570.4
<i>Note: Union County HIV data suppressed due to low count.</i>							
	Source	Area	2018	2019	2020	2021	2022
Mental Health							
Mental Health 48 Hour Holds-Adults	WCCC	WC	234	216	183	NYA	
Mental Health 48 Hour Holds-Youth	WCCC	WC	56	39	18	NYA	
Mental Health Providers	CHR	WC	500:1	470:1	450:1	450:1	440:1
Mental Health Providers	CHR	IA	760:1	700:1	640:1	610:1	570:1
Mental Health Providers	CHR	DC	490:1	440:1	430:1	430:1	430:1
Mental Health Providers	CHR	NE	420:1	440:1	380:1	360:1	340:1
Mental Health Providers	CHR	UC	2,990:1	2,500:1	1,950:1	2,280:1	2310:1
Mental Health Providers	CHR	SD	610:1	590:1	550:1	530:1	500:1
Poor Mental Health Days (in past 30 days)	CHR	WC	3.4	3.4	3.7	3.7	4
Poor Mental Health Days (in past 30 days)	CHR	IA	3.3	3.3	3.6	3.5	4.1
Poor Mental Health Days (in past 30 days)	CHR	DC	3.1	3.1	3.2	3.5	3.8
Poor Mental Health Days (in past 30 days)	CHR	NE	3.2	3.2	3.5	3.6	3.8
Poor Mental Health Days (in past 30 days)	CHR	UC	2.5	2.5	2.6	2.8	3.4
Poor Mental Health Days (in past 30 days)	CHR	SD	2.9	2.9	3.2	3.3	3.7
	Source	Area	2017	2018	2019	2020	2021
Sleep							
Insufficient Sleep	CHR	WC	32%	28%	28%	28%	32%
Insufficient Sleep	CHR	DC	31%	33%	33%	33%	33%
Insufficient Sleep	CHR	UC	25%	26%	26%	26%	29%
	Source	Area	2017	2018	2019	2020	2021
Reoccurring Teen Births							
Reccuring Births to Teen Mothers	UPH	TRI	17	13	9	16	12

	Source	Area	2014	2015	2016	2017	2018
Teen Births (Per 1,000 Females in Age Range)							
Estimated Teen Birth Rate (15-19)	NCHS/CHR	WC	32	29.5	27	25.1	27
Estimated Teen Birth Rate (15-19)	NCHS/CHR	DC	39.9	37.1	34.2	32	33
Estimated Teen Birth Rate (15-19)	NCHS/CHR	UC	10.9	9.9	8.9	8.2	8

SAFETY

Vision

- The Siouxland Community is a safe place for all residents to live, work, and raise children.

Objectives

- Decreased Availability of Illegal Drugs
- Decreased Childhood Trauma
- Reduction in Violent Crime
- Reduction in Accident Mortality

2022 Scorecard

Siouxland's Safety indicators show areas of strength and opportunity.



Safety					
Objective	2022 Indicators	2022 Report	Trend	Status	Previous Report
Decreased Availability of Drugs	Grams of Methamphetamine Seized (2021)	Tri-State: 129,620	↗	Red	44,520
Decreased Childhood Trauma	Abused Neglected Children (2020) Child Victims Northern Area (2020)	Woodbury: 463	↘	Yellow	Woodbury: 631
		Dakota (NSA): 375	↘	Yellow	Dakota (NSA): 411
Reduction in Violent Crime	Reported Violent Crimes per 100,000 Population (2016)	Woodbury: 355	→	Red	Woodbury: 355
		Dakota: 234	→	Yellow	Dakota: 234
		Union: 146	→	Green	Union: 146
Reduction in Accident Mortality	Motor Vehicle Crash Deaths per 100,000 Population (2014-2020)	Woodbury: 11	↗	Yellow	Woodbury: 10
		Dakota: 15	→	Yellow	Dakota: 15

Note: "Trend" looks at the change in comparison to local data for the past few years. "Status" refers to how the numbers compare to regional, state, or national data.

SOURCES: QF, CHR, PCAI, SCPD

SAFETY							
	Source	Area	2018	2019	2020	2021	2022
Vehicle Safety							
Motor Vehicle Crash Deaths per 100,000 Population	CHR	WC	9	10	10	10	11
Motor Vehicle Crash Deaths per 100,000 Population	CHR	DC	12	13	12	15	15
Alcohol Impaired Driving Deaths	CHR	WC	26%	22%	20%	29%	28%
Alcohol Impaired Driving Deaths	CHR	DC	18%	18%	23%	20%	10%
Alcohol Impaired Driving Deaths	CHR	UC	9%	14%	33%	33%	33%
<i>Note: Alcohol Impaired Driving Death indicators reflect Percentage of driving deaths with alcohol involvement.</i>							
	Source	Area	2017	2018	2019	2020	2021
Delinquency and Violence- Iowa							
Delinquency Petitions Filed	EZAJCD	WC	134	100	103	96	109
Delinquency Petitions Filed	EZAJCD	IA	3,112	3,375	3,381	2,645	2,214
Juvenile Charges	EZAJCD	WC	971	853	851	793	879
Juvenile Charges	EZAJCD	IA	17,632	17,817	18,034	14,100	14,658
	Source	Area	2016	2017	2018	2019	2020
Delinquency and Violence- Nebraska							
Juvenile Arrests-Total #	NKC	DC	129	96	46	87	NYA
Juvenile Arrests-Total #	NKC/NCC	NE	9,463	9,858	8,988	8,636	NYA
Simple Assault, # Juvenile Arrests	NCC	DC	19	17	17	14	NYA
Juvenile Larcenies-# Juvenile Arrests	NCC	DC	40	8	6	6	NYA
Adjudicated Youth-Total #	NCC	DC	53	64	68	NYA	NYA
Liquor Law Violations, <18 years old	NCC	DC	5	18	NYA	NYA	NYA
DUI <18 years old	NCC	DC	1	1	NYA	NYA	NYA
Drug Violations <18 years old	NCC	DC	14	9	NYA	NYA	NYA
	Source	Area		2018	2019	2020	2021
Delinquency and Violence- South Dakota							
Youth Offenses Resulting in Adjudicatory Action (Fiscal Year)	KCSD	UC		37	69	58	40
Youth Offenses Resulting in Adjudicatory Action (Fiscal Year)	KCSD	SD		4617	4561	4114	2995
Juvenile Arrest Rate							
Rate of Delinquency Cases Per 1,000 Juveniles	CHR	WC			54	54	53
Rate of Delinquency Cases Per 1,000 Juveniles	CHR	DC			24	27	17
Rate of Delinquency Cases Per 1,000 Juveniles	CHR	UC			19	12	23
<i>Note: County Health Rankings and Roadmaps used data from four years prior to each report year (ex: 2021= Data from 2018).</i>							
	Source	Area	2017	2018	2019	2020	2021
Juvenile Detention							
Juvenile Detentions - Violent Crimes	WCDHR	WC	26.3%	27.6%	36.8%	40.0%	43.8%
Juvenile Detentions - Property Crimes	WCDHR	WC	38.4%	30.6%	32.5%	40.0%	28.1%
Juvenile Detentions - Drugs	WCDHR	WC	19.2%	24.5%	14.9%	11.7%	14.1%
Juvenile Detentions - Public Order	WCDHR	WC	7.1%	16.0%	15.8%	8.3%	14.1%
Juvenile Detentions - Other	WCDHR	WC	9.1%	1.0%	0.0%	0.0%	0.0%
Total Juvenile Holds	WCDHR	WC		100	114	60	64
	Source	Area	2018	2019	2020	2021	2022
Crime							
Reported Violent Crimes per 100,000 Population	CHR	WC	326	355	355	355	355
Reported Violent Crimes per 100,000 Population	CHR	DC	130	234	234	234	234
Reported Violent Crimes per 100,000 Population	CHR	UC	100	146	146	146	146
Total Arrests for All Crimes	SCPD	SC					3,217

	Source	Area	2017	2018	2019	2020	2021
Quantity of Drugs Seized-grams:							
Cocaine/Crack (Grams)	TSDTF	Tri	18,593.2	51.0	1,362.1	2	0
Methamphetamine (Grams)	TSDTF	Tri	67,022.5	51,888.0	56,552.6	44,520	129,620
Methamphetamine Solution (ml)	TSDTF	Tri					15,061
Marijuana/Cannabis/THC Products (Grams)	TSDTF	Tri	118,989.5	12,441.0	43,532.6	40,569	6,401
Heroin (Grams)	TSDTF	Tri	2,016.0	9,087.0	2,102.6	2,136	14
Fentanyl (Grams)	TSDTF	Tri		2,000.0	0.0	0	1,068
Psilocybin Mushrooms	TSDTF	Tri					2,000
LSD/MDMA/Ecstasy (Dosage Units)	TSDTF	Tri		30.0	0.0	18	0
Bathsalts (Grams)	TSDTF	Tri		39.0	0.0	0	0
Prescription Drugs (Dosage Units)	TSDTF	Tri				1,277	
Buprenorphine (Grams)	TSDTF	Tri					19
Zolpidem (Grams)	TSDTF	Tri					20
Clonazepam (Grams)	TSDTF	Tri					41
Ritalin (Drug Units)	TSDTF	Tri					2
Unknown RX Pills (Drug Units)	TSDTF	Tri					4
	Source	Area	2017	2018	2019	2020	2021
Domestic Violence							
Sioux City Domestic Assaults	SCPD	SC		457	411	453	709
Simple Domestic Assaults Reported	NCLECJ	DC	70	88	48	54	41
Simple Domestic Assaults Reported	NCLECJ	NE	6,752	7,216	6,124	6,235	NYA
Aggravated Domestic Assaults Reported	NCLECJ	DC	18	14	5	7	5
Aggravated Domestic Assaults Reported	NCLECJ	NE	1100	1120	1032	1,136	NYA
	Source	Area	2016	2017	2018	2019	2020
Marriages & Divorces							
Dissolutions of Marriage	IDPH	WC	124	137	164	NYA	NYA
Dissolutions of Marriage	SDDOH	UC			36	38	40
<i>Note: Divorce data may be incomplete, as some data was not submitted to the State in various years in Iowa.</i>							
	Source	Area	2016	2017	2018	2019	2020
Abused & Neglected Children							
Unique Abused Children/1,000	PCAI	WC	16.6	24.2	21.96	23.3	17.5
Unique Abused Children/1,000	PCAI	IA	12.2	15.6	15.83	15.7	14.5
Number of Abused/Neglected Children	IDHS	WC	448	654	594	631	463
Number of Abused/Neglected Children	IDHS	IA	8,892	11,236	11,568	11,468	11,292
Confirmed/Founded Abuse Reports	IDHS	WC	319	439	436	439	328
Confirmed/Founded Abuse Reports	IDHS	IA	6,484	8,558	8,743	8,514	8,543
Substantiated Child Victims in the Northern Service Area	DHHS	NSA-NE	464	472	411	310	375
Substantiated Victims of Child Abuse/Neglect	DHHS	NE	3,725	3,612	3,346	3,267	3,224
	Source	Area	2018	2019	2020	2021	2022
Program Participation							
Monthly Family Treatment Court Adult Participants	FTC	WC				22.75	18.13
<i>Note: This data averages the number of adult participants each month from January through August.</i>							

QUALITY OF LIFE

Vision

- Residents feel welcome, connected, and able to thrive in Siouxland.
- Access to healthy foods, parks and recreation, and arts and culture continually improve.

Objectives

- Increased Volunteerism
- Increased Social Associations
- Increased Exercise Opportunities

2022 Scorecard

Quality of Life data shows areas where Siouxland is thriving and areas of opportunity.



Quality of Life					
Objective	2022 Indicators	2022 Report	Trend	Status	Previous Report
Increased Volunteerism	Volunteer Hours United Way & Community Partners (2021)	Siouxland: 79,871	↘	Yellow	Siouxland: 111,261
Social Associations	Social Associations (2019)	Woodbury: 13.7	→	Yellow	Woodbury: 13.2
		Dakota: 5.0	↘	Red	Dakota: 7
		Union: 11.3	→	Red	Union: 11.5
Increased Exercise Opportunities	Access to Exercise Opportunities for Adults (2010-2021)	Woodbury: 94%	→	Green	Woodbury: 94%
		Dakota: 85%	→	Yellow	Dakota: 86%
		Union: 66%	↘	Yellow	Union: 74%

Note: "Trend" looks at the change in comparison to local data for the past few years. "Status" refers to how the numbers compare to regional, state, or national data.

SOURCES: QF, CHR, UW

Quality of Life							
	Source	Area	2018	2019	2020	2021	2022
Healthy Food Access							
Food Environment Index	CHR	WC	7.9	7.9	7.9	8.1	8.6
Food Environment Index	CHR	IA	8.2	8.2	8.2	8.5	8.4
Food Environment Index	CHR	DC	8.6	8.5	8.2	7.8	8.0
Food Environment Index	CHR	NE	8.1	8.1	8.0	7.6	7.7
Food Environment Index	CHR	UC	9.0	9.0	8.7	9.0	9.1
Food Environment Index	CHR	SD	6.6	6.6	6.5	6.6	7.3
	Source	Area	2018	2019	2020	2021	2022
Exercise Opportunities							
Access to Exercise Opportunities	CHR	WC	94%	94%	94%	94%	94%
Access to Exercise Opportunities	CHR	IA	83%	83%	83%	83%	83%
Access to Exercise Opportunities	CHR	DC	89%	88%	86%	86%	85%
Access to Exercise Opportunities	CHR	NE	83%	84%	84%	84%	78%
Access to Exercise Opportunities	CHR	UC	64%	72%	72%	72%	66%
Access to Exercise Opportunities	CHR	SD	72%	72%	74%	74%	66%
	Source	Area	2016	2017	2018	2019	2020
Commute to Work							
Mean Travel Time to Work in Minutes	QF	WC			17.8	18	18
Mean Travel Time to Work in Minutes	QF	IA			19	19.1	19.5
Mean Travel Time to Work in Minutes	QF	DC			14.7	15.5	15
Mean Travel Time to Work in Minutes	QF	NE			18.4	18.6	18.9
Mean Travel Time to Work in Minutes	QF	UC				19.7	19
Mean Travel Time to Work in Minutes	QF	SD				17	17.3
Mean Travel Time to Work in Minutes	QF	USA			26.4	26.6	26.9
	Source	Area	2018	2019	2020	2021	2022
Parks & Recreation							
Miles of Trails	SCPR	SC		27.42	27.42	32.36	34.26
Miles of Trails	SSCPR	SSC		18.5	19.5	20	20
Number of Parks	SCPR	SC		57	58	58	68
Number of Parks	SSCPR	SSC		10	11	11	10
Public Disc Golf Courses	SCPR	SC			3	3	3
Public Disc Golf Courses	SSCPR	SSC			1	1	1
Public Basketball Courts	SCPR	SC			4	6	5
Public Basketball Courts	SSCPR	SSC			2	2	2
Public Tennis Courts	SCPR	SC			8	8	8
Public Tennis Courts	SSCPR	SSC			3	5	2
Public Swimming Pools	SCPR	SC			3	3	3
Public Swimming Pools	SSCPR	SSC			1	1	1
Splash Pads (Public & Private)	SCPR	SC			6	6	5
Public Pickleball Courts	SCPR	SC			8	8	8
Public Futsal Courts	SCPR	SC			1	2	2
	Source	Area	2016	2017	2018	2019	2020
Technology Access							
Households with broadband internet access	QF	WC				75.7%	81.1%
Households with broadband internet access	QF	DC				75.3%	77.3%
Households with broadband internet access	QF	UC				79.7%	85.4%
Households with broadband internet access	QF	USA				80.4%	85.2%
	Source	Area	2018	2019	2020	2021	2022
Connections							
Social Associations (Membership Associations per 10,000 People)	CHR	WC	14.0	13.4	13.8	13.2	13.7
Social Associations (Membership Associations per 10,000 People)	CHR	DC	8.7	9.3	9.4	7.0	5.0
Social Associations (Membership Associations per 10,000 People)	CHR	UC	13.4	13.8	11.3	11.5	11.3

	Source	Area	2018	2019	2020	2021	2022
Worship							
Places of Worship	SCFR	SC			108	111	111
Places of Worship	SSCL	DC			16	16	15
	Source	Area	2013	2015	2017	2019	2021
Volunteerism							
Volunteer Hours for Local United Way & United Way Partner Organizations	UW	TRI				111,261	79,871
Value of Volunteer Hours of Local United Way & United Way Partner Orgs	UW	TRI				\$2,829,367	\$2,279,518
Individuals Who Completed Volunteer Hours Through Volunteer Siouxland	VS	TRI				1,405	NYA
<i>Note: Volunteer hours were impacted by a reduction in opportunity, due to COVID-19.</i>							
	Source	Area	2017	2018	2019	2020	2021
Community Policing							
Community Policing Activities/Events	SCPD	SC			443	247	301
Problem Oriented Policing (POP) Projects	SCPD	SC					360

COVID-19 Data

Beginning in mid-February 2022, Source For Siouxland ceased providing community reports as agencies changed how they reported the data, stopped reporting this data all together, more people were testing at home, and decreased activity. The following is a brief summary of composite data we are able to collect through August 31, 2022. Prior reports may be found at sourceforsiouxland.com.

Note: Official COVID-19 case/test counts have become less reliable with more people testing at home and not reporting the results.

Total Siouxland Positive Covid-19 Tests 54,593 (increase of 5,488 from last February report)	Total Siouxland Deaths Due to Covid-19 585 (increase of 45 from last February report)
---	--

Woodbury County

Total Positive Tests: **35,470** (increase of 3,689 from last February 2022 report)

Total Deaths due to Covid-19: **345** (increase of 31 from last February 2022 report)

% of Total Population Fully Vaccinated in Woodbury County-8/1/22: **53.1%**

Booster Doses given in Woodbury County-first: **25,805**

Booster Doses given in Woodbury County-second: **4,893**

Iowa Dept. of Public Health

Plymouth County

Total Positive Tests: **7,526** (increase of 651 from last February 2022 report)

Total Deaths due to Covid-19: **106** (increase of 11 from last February 2022 report)

% of Total Population Fully Vaccinated in Plymouth County-8/1/22: **52.7%**

Booster Doses given in Plymouth County-first: **6,985**

Booster Doses given in Plymouth County-second: **1,060**

Data from Iowa Department of Health

Dakota County

Total Positive Tests: **7,430** (increase of 944 from last February 2022 report)

Total Deaths due to Covid-19: **82** (no change from last February 2022 report)

% Fully Vaccinated in Dakota County: **66.4%**

% Fully Vaccinated in Dakota County with a first booster dose: **33.7%**

Data from Dakota County Health Department, Nebraska Department of Health, CDC

Union County

Total Positive Tests: **4,167** (increase of 204 from last February 2022 report)

Total Recovered: **4,106** (increase of 377 from last February 2022 report)

Total Deaths due to Covid-19: **52** (increase of 3 from last February 2022 report)

% PCR Test Positivity Rate Weekly: **18.9%**

Number of Persons (1 Dose): **1,265**

Number of Persons (2 Doses): **2,723**

Number of Persons (3 Doses): **1,855**

Data from South Dakota Department of Health

Data from the Iowa, Nebraska, and South Dakota Health Departments, Siouxland District Health Department, Dakota County Health Department, and the CDC. Counties include Woodbury and Plymouth, Iowa; Dakota, Nebraska; and Union, South Dakota.

Sources & Areas Key			
Symbols	Sources	Symbols	Sources
AHR	America's Health Rankings	SCHA	Sioux City Housing Authority
ATLAS	Centers for Disease Control Atlas Plus	SCPD	Sioux City Police Department
BLS	Bureau of Labor Statistics	SCPR	Sioux City Parks and Recreation
CARES	Siouxland CARES Compliance Check Data	SCYS	Siouxland CARES Youth Survey
CCR&R	Child Care Resource & Referral of Northwest Iowa	SDDE	South Dakota Department of Education
CDC-W	Centers for Disease Control Vital Statistics- WONDER	SDDOH	South Dakota Department of Health
CEN	CARES Engagement Network	SFS	Source For Siouxland Collection from Health Departments
CFS	Center For Siouxland	SL	Unity Point Health-Saint Luke's
CHR	County Health Rankings & Roadmaps	SSCCS	South Sioux City Community Schools
DHHS	Department of Health and Human Services	SSCL	South Sioux City Library
ERS	USDA Economics Research Service	SSCPD	South Sioux City Police Department
EZAJCD	Easy Access to Juvenile Court Data-Iowa	SSCPR	South Sioux City Parks and Recreation
FBS	Food Bank of Siouxland	TSDTF	Tri-State Drug Task Force
FDA	US Food and Drug Association	UPH	Unity Point Health
FTC	Woodbury County Family Treatment Court	UW	United Way of Siouxland
IABD	Iowa Alcoholic Beverages Division	VS	Volunteer Siouxland
ICA	Institute For Community Alliances	WCCC	Woodbury County Clerk of Courts
IDE	Iowa Department of Education	WCDHR	Woodbury County Detention Hold Report
IDHR	Iowa Department of Human Rights		
IDHS	Iowa Department of Human Services	Symbols	Areas
IKC	Iowa Kids Count	DC	Dakota County
IYS	Iowa Youth Survey	DV	Dakota Valley School District
KCDS	Kids Count Data Center	FBR	Food Bank Region
KCSD	Kids Count South Dakota	IA	Iowa
MO	MercyOne	MWR	Bureau of Labor Statistics Midwest Region
NCC	Nebraska Crime Commission	NE	Nebraska
NC-EMSI	Northeast Community College-EMSI Educational Attainment	NSC	North Sioux City
NCES	National Center for Educational Statistics	NSE-NE	DHHS Nebraska Northern Service Area
NCHS	National Center for Health Statistics	NWAEA	Northwest Area Education Agency Service Area
NCLECJ	Nebraska Commission on Law Enforcement & Criminal Justice	PC	Plymouth County
NDE	Nebraska Department of Education	SC	Sioux City
NEP	Nebraska Education Profile	SCCSD	Sioux City Community School District
NIH	National Institute of Health	SD	South Dakota
NKC	Nebraska Kids Count	SSC	South Sioux City
PCAI	Prevent Child Abuse Iowa	SSCCS	South Sioux City Community Schools
QF	Census Quick Facts	TRI	Siouxland Tri-State Area
SAIPE	Census Small Area Income & Poverty Estimate	UC	Union County
SCCSD	Sioux City Community School District	USA	United States
SCFR	Sioux City Fire Rescue	WC	Woodbury County